

BOSCH HEALTH CAMPUS WE'RE RETHINKING HEALTHCARE

Since it was founded, the Robert Bosch Stiftung has been taking its lead from Robert Bosch in supporting public health care. Now the Stiftung is consolidating its activities and institutes at the new **Bosch Health Campus**.

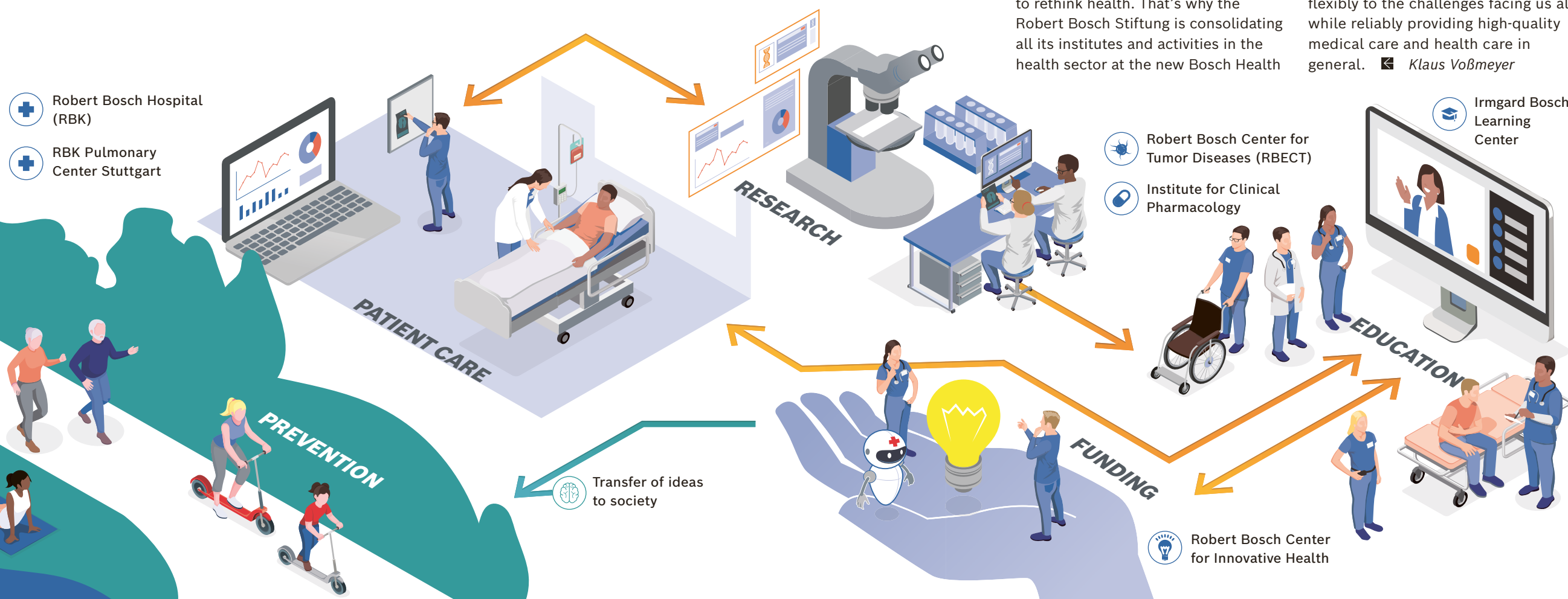


ILLUSTRATION AND PHOTOS: ROBERT BOSCH STIFTUNG, FOTOSTUDIO M42, BOPICTURE.DE

Our greatest wish for everyone is that they enjoy good health! But what will the future of health care look like in the face of huge changes brought about by major trends such as demographic change? We are living longer and longer, and as we age, the chances that we get sick more often increase. Digitalization is revolutionizing our opportunities and processes, and it is doing the same with technological innovations in health care. These include digital patient records, telemedicine, and artificial intelligence. At the same time, the health care system is facing global developments such as pandemics and new syndromes and conditions. Migration and climate change also pose new challenges.

Given these challenges, it is time to rethink health. That's why the Robert Bosch Stiftung is consolidating all its institutes and activities in the health sector at the new Bosch Health

Campus in Stuttgart. Soon we will see a greater integration of treatment, education, research, and promotion of healthcare. In this way, patients in the Robert Bosch Hospital will benefit from the latest research findings, such as those regarding tumor diseases and drug therapies, conducted by the institutes – not to mention the researchers who can learn from the successes of the treatments and make them a permanent part of the process. The new findings are immediately incorporated into the training of the specialists in medical care and the nursing staff at the education center. The non-profit Robert Bosch Center for Innovative Health promotes promising ideas for a sustainable, patient-oriented health care system.

The Bosch Health Campus enables the Stiftung to respond flexibly to the challenges facing us all while reliably providing high-quality medical care and health care in general. **Klaus Voßmeyer**

"We can pilot things across sector boundaries at the Bosch Health Campus and use them to serve as a model. We can show what optimal patient care can look like – digitally, medically, technically speaking. We can also have an international impact when doing so."

—**DR. BERNHARD STRAUB**,
Chief Executive Officer,
Robert Bosch Stiftung

"The impact of medical research is often slow. For example, patients at the hospital can participate in studies at the Bosch Health Campus. This significantly shortens the path from research to specific treatments."

—**DR. HELIA BERRIT SCHÖNTHALER**,
Chief Operating Officer, RBK

"As part of the Bosch Health Campus, the Robert Bosch Hospital is a research hospital. In this context, it is a major advantage for us to have Robert Bosch GmbH as a partner, as it is at the forefront of health technology and digitalization."

—**DR. MARK DOMINIK ALSCHER**,
Medical Director at the RBK