




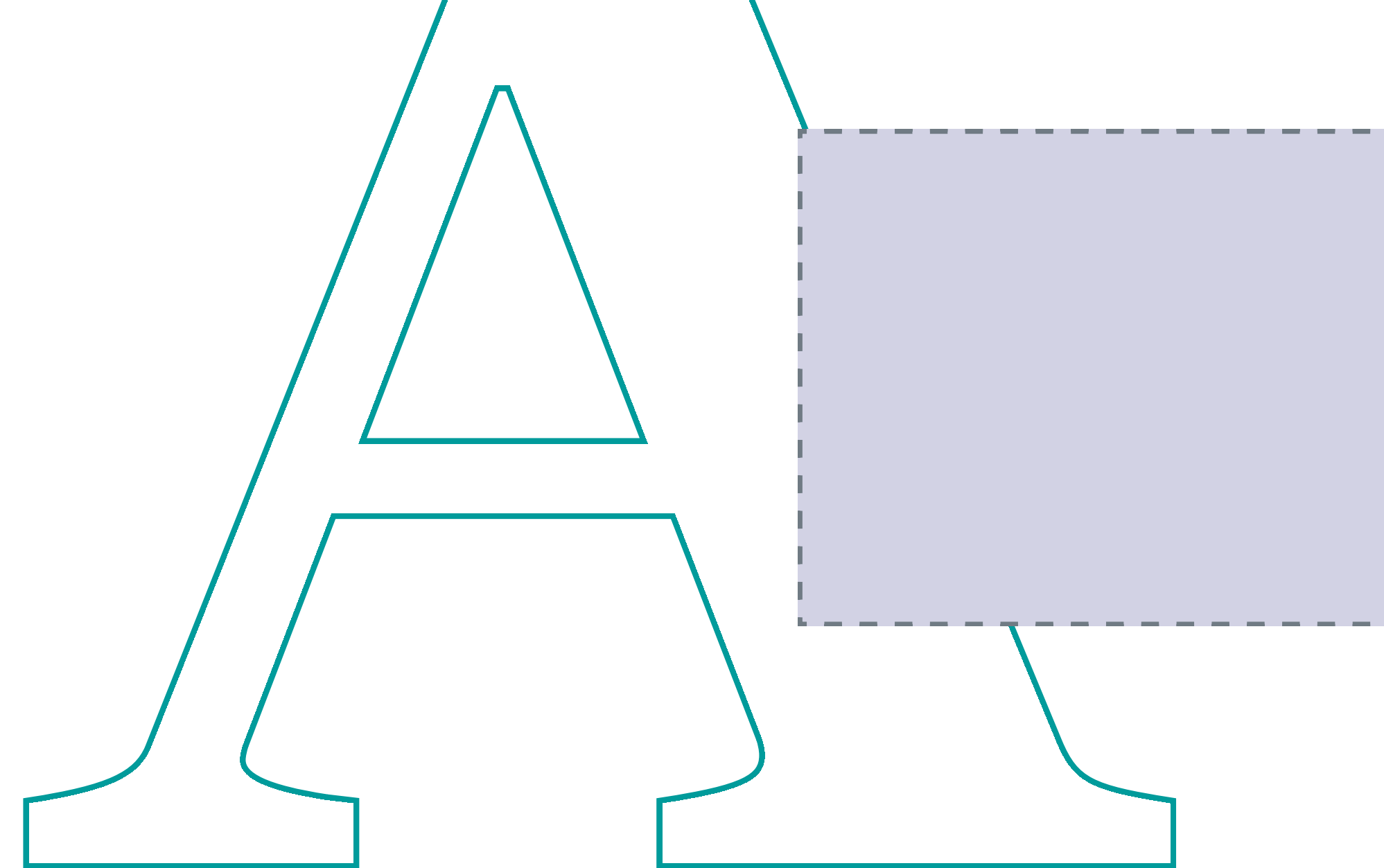
# MOTION STYLE GUIDE

# CONTENTS

---

01	Typo & Colour
02	Safe spaces
03	Logo: Position & Colouring
04	Intro
05	Text overlays
06	Outro
07	Social Media
08	Transitions & Effects
09	<a href="#">Download &amp; Presets</a> 

# TYP0 & COLOUR



# TYPOGRAPHY

## BOSCH SANS

---

**BLACK - VERSAL**

## Bosch sans

---

**REGULAR & BOLD - MIXED**

For titles / subhead / highlights  
Tracking: -5

**Line spacing**

Font size <20 = 1.5

Font size >20 = 1.3

For general text  
Tracking: 0

**Line spacing**

Font size <20 = 1.5

Font size >20 = 1.3

# CORPORATE & AREAS OF SUPPORT COLOURS

## AREAS OF SUPPORT



RGB 120 / 45 / 130  
#782D82



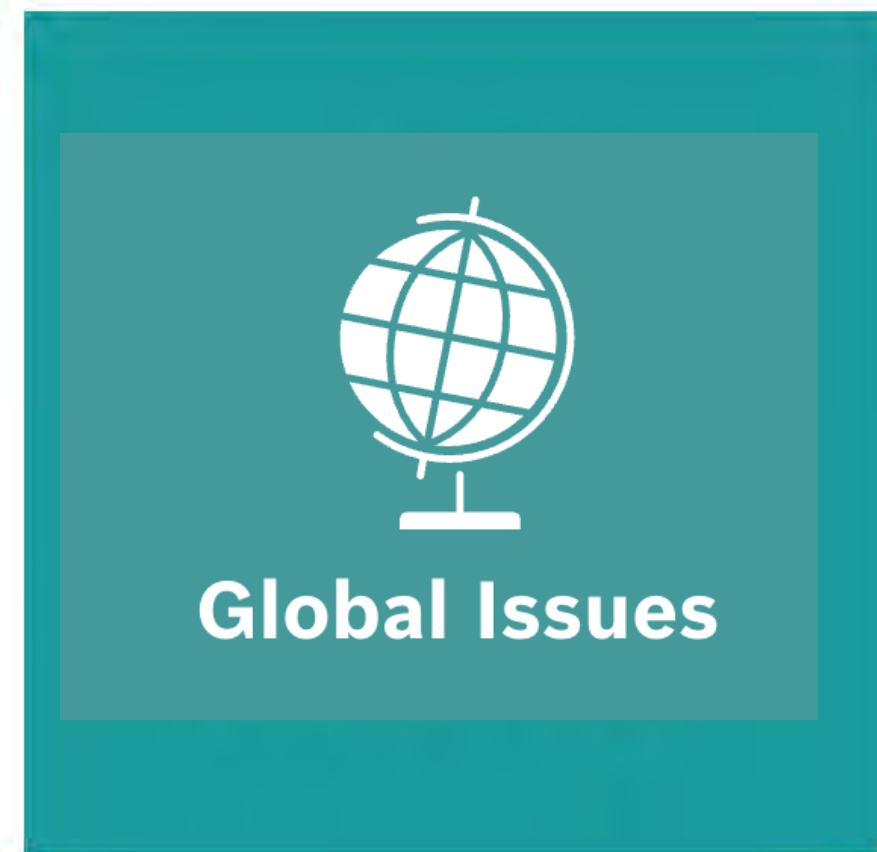
RGB 219 / 199 / 222  
#DBC7DE



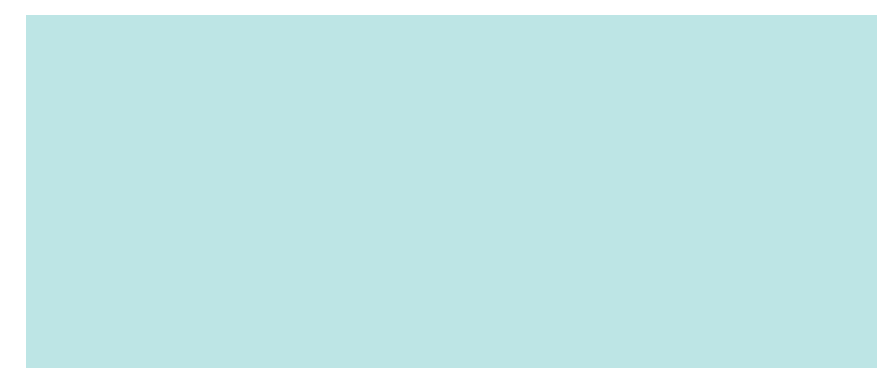
RGB 35 / 35 / 125  
#23237D



RGB 120 / 210 / 228  
#D2D2E4

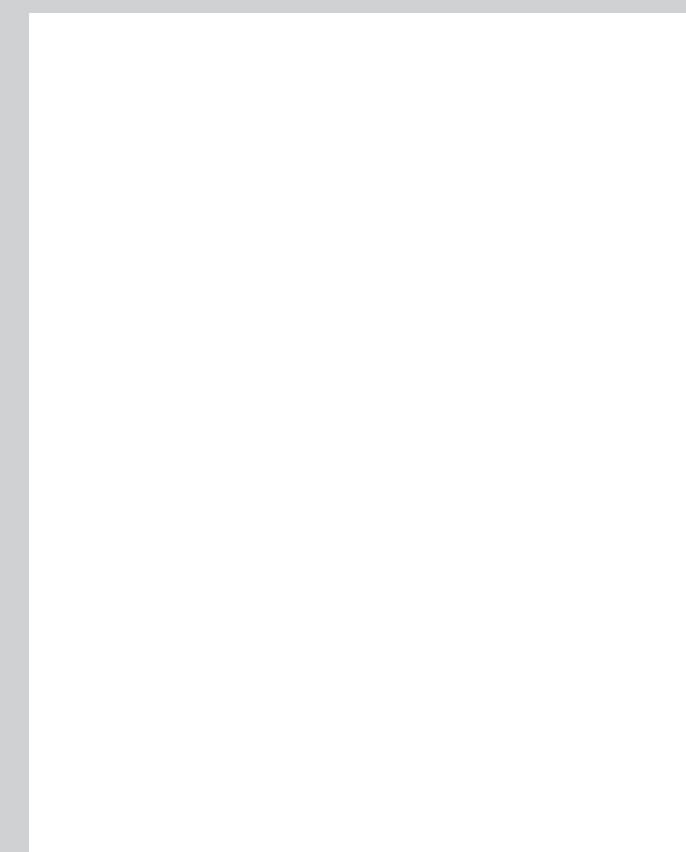


RGB 0 / 155 / 155  
#009B9B



RGB 210 / 210 / 228  
#BDE5E5

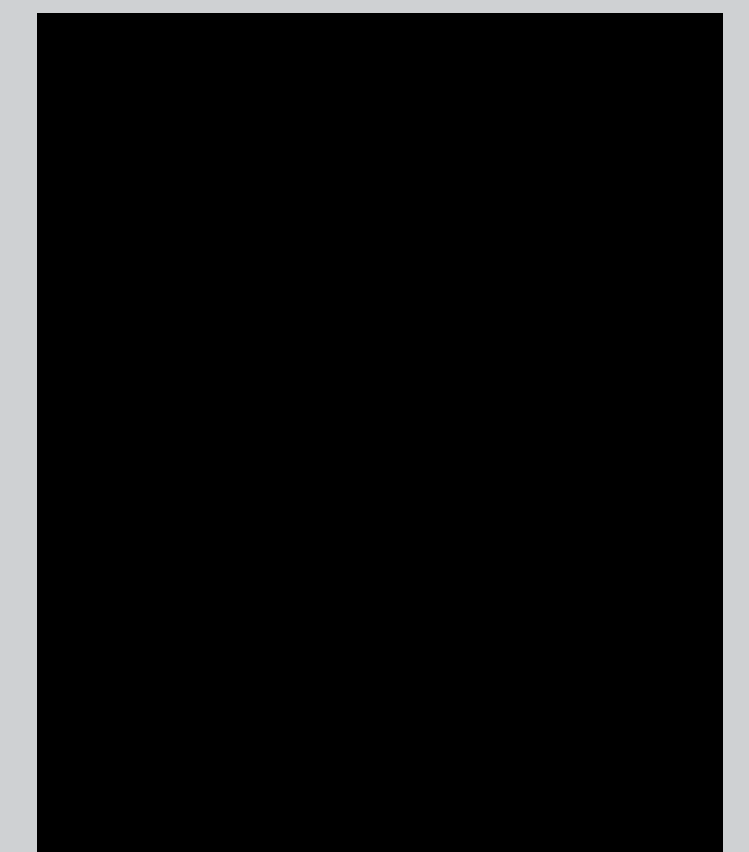
## CORPORATE



RGB 255 / 255 / 255  
#FFFFFF



RGB 94 / 102 / 110  
#707B84



RGB 0 / 0 / 0  
#000000



RGB 225 / 10 / 20  
#E10A14

# SAFE SPACES

Safe spaces

---



# VIDEO 16:9



---

Margin all around: 100px

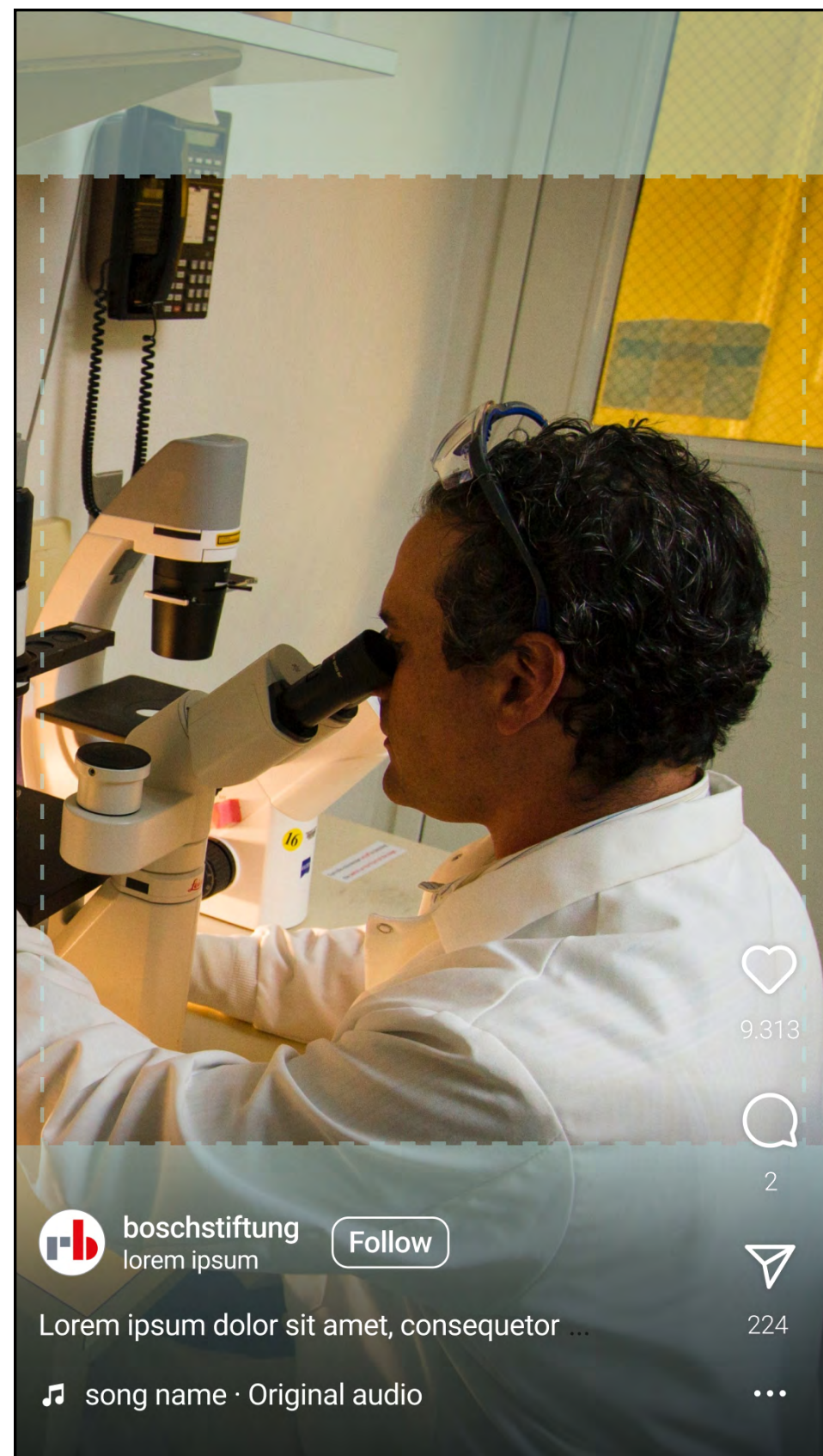
---

Area for the placement of overlay elements - e.g. text content and logo overlays.

Area size: 1620 x 780px  
Margin: 150px

# SOCIAL MEDIA 9:16

## VIDEO 9:16 REELS & SHORTS



Margin: 200px

Area for the placement of overlay elements - e.g. text content and logo overlays.

Area size: 1010 x 1280px  
Margin: 40px

Margin: 420px

\*Depending on the platform, the lower edge distance must be adjusted.

## VIDEO 9:16 STORIES



Margin: 250px

Area for the placement of overlay elements - e.g. text content and logo overlays.

Area size: 1010 x 1470px  
Margin: 40px

Margin: 200px

\*Depending on the platform, the lower edge distance must be adjusted.

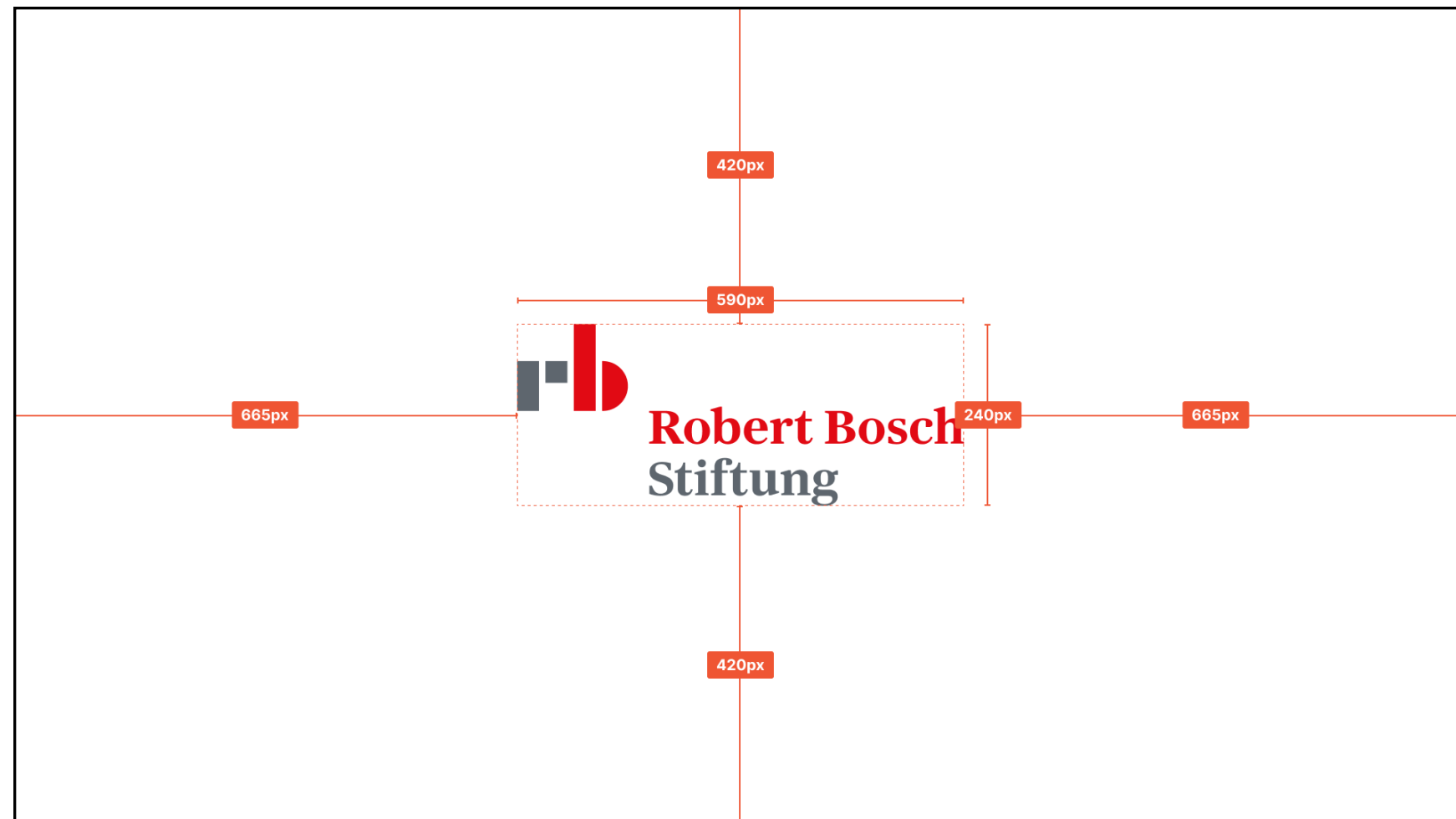
## Safe spaces



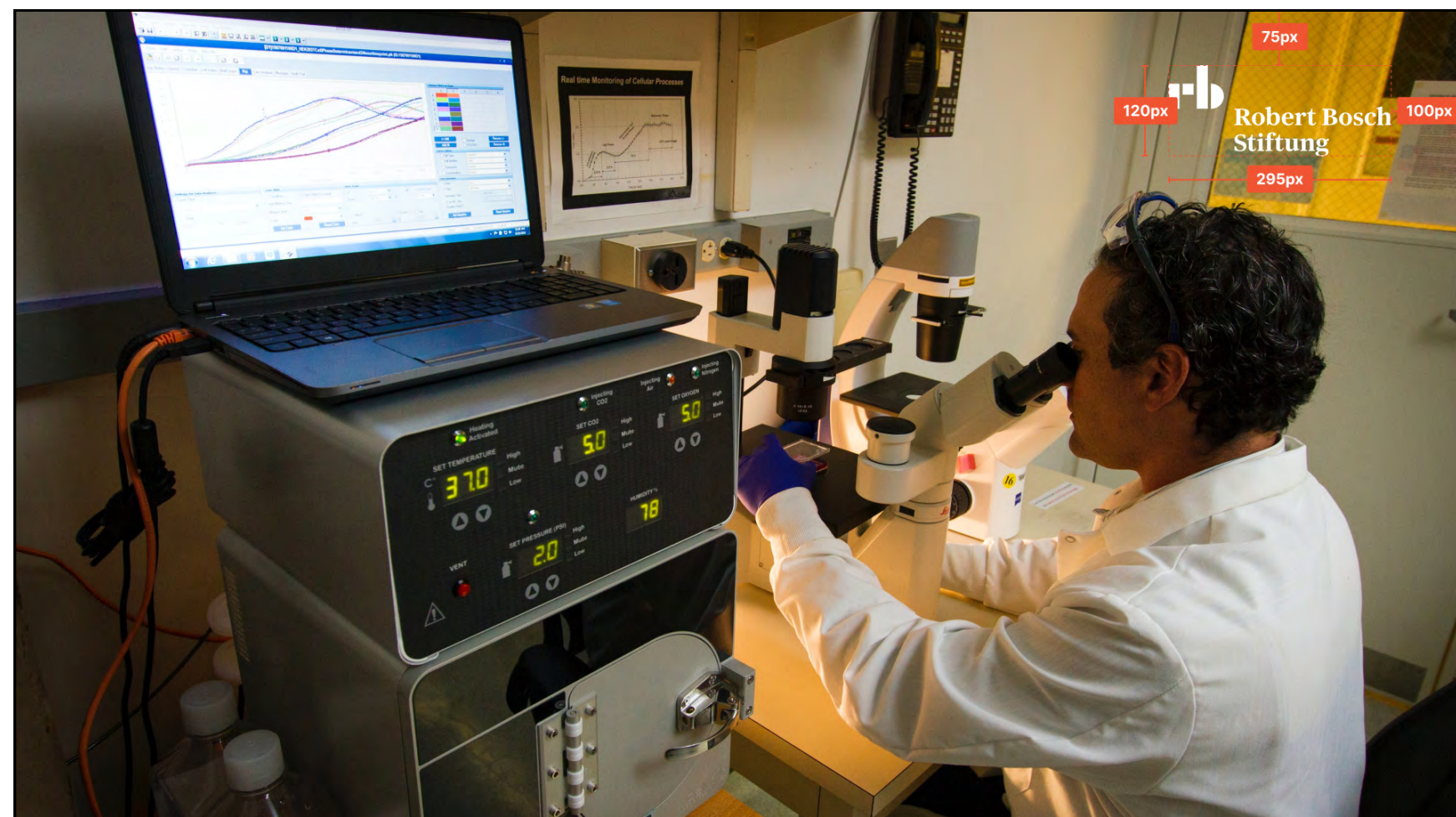
# LOGO: POSITION & COLOURING



# LOGO: DEFAULT



Logo centred in corporate style.  
Opacity: 100%

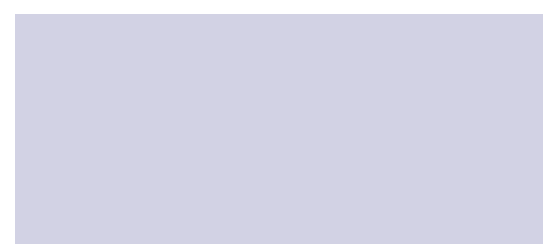


Cornerbug logo:  
The logo is always displayed at the top right in 16:9 videos, except in the outro. The Cornerbug logo is omitted in 9:16 videos.

# LOGO: AREAS OF SUPPORT



Logo in the middle, in black, with the respective area of support colour in the background if a video is to be assigned to an area of support.  
Opacity: 100%



Background



Logo colour

Logo: Position & Colouring

# INTRO

947px

# THIS IS A TITLE LOREM IPSUM

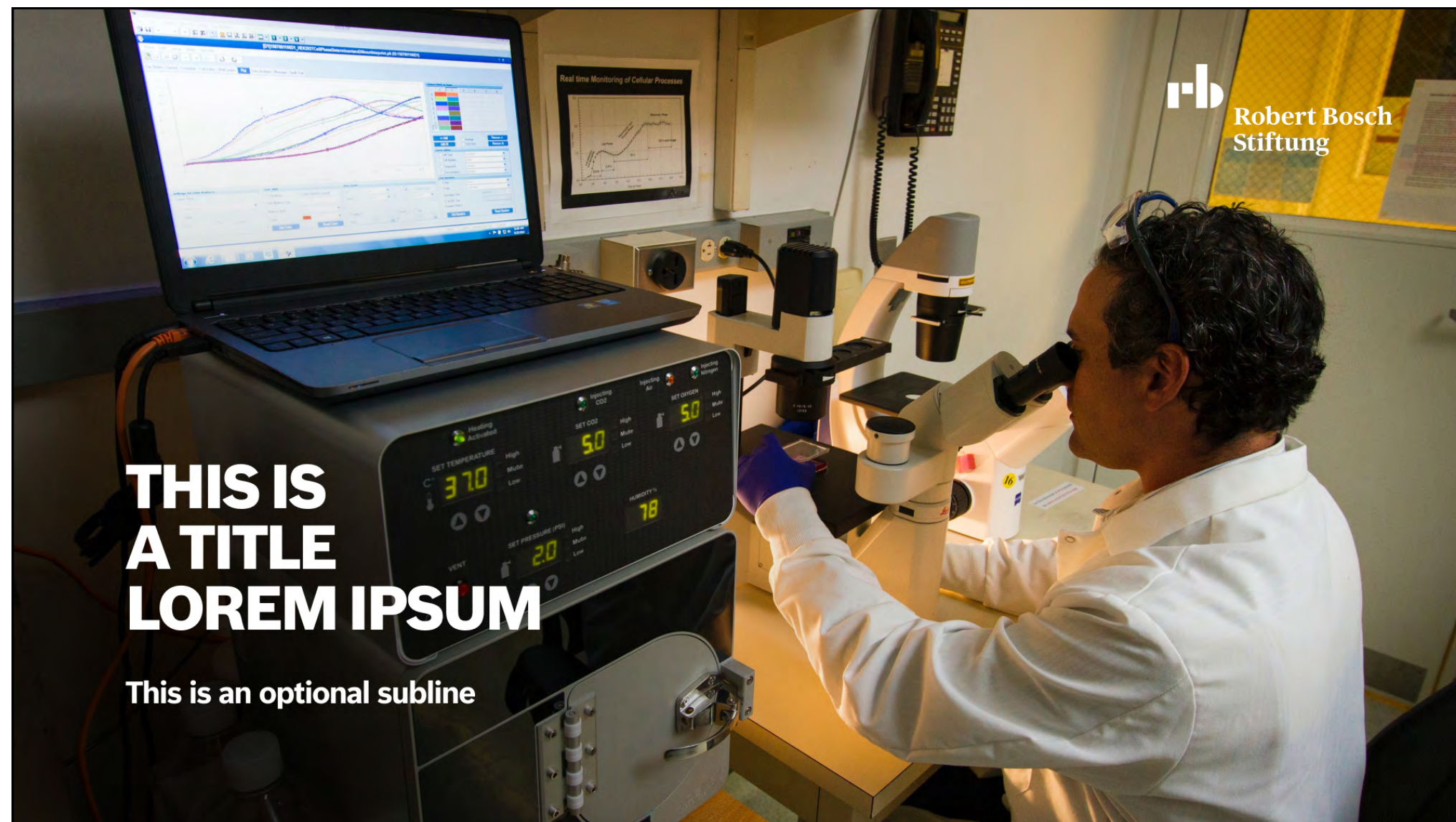
154px

40px

This is an optional subline,  
which could have two lines.

96px

# INTRO: DEFAULT



---

Intros can be used with or without a subline. The title is always at the bottom left with a slight darkening for better legibility. The subline could also have two lines.

# INTRO: FALLBACK

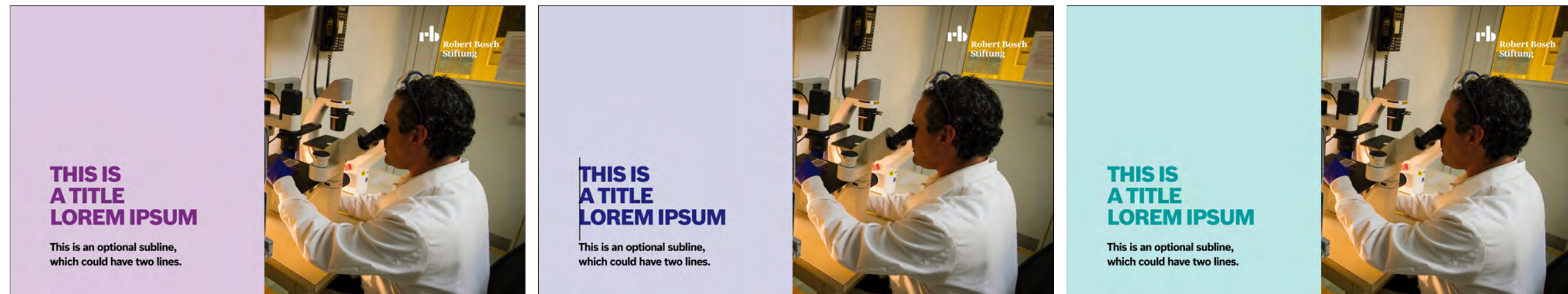
**THIS IS  
A TITLE  
LOREM IPSUM**

This is an optional subline,  
which could have two lines.



The fallback variant is used, if the video material is not suitable. This can be used either in the corporate colour or in the area of support colours, depending on the desired area of support affiliation of the video (see following page).

# INTRO: AREAS OF SUPPORT



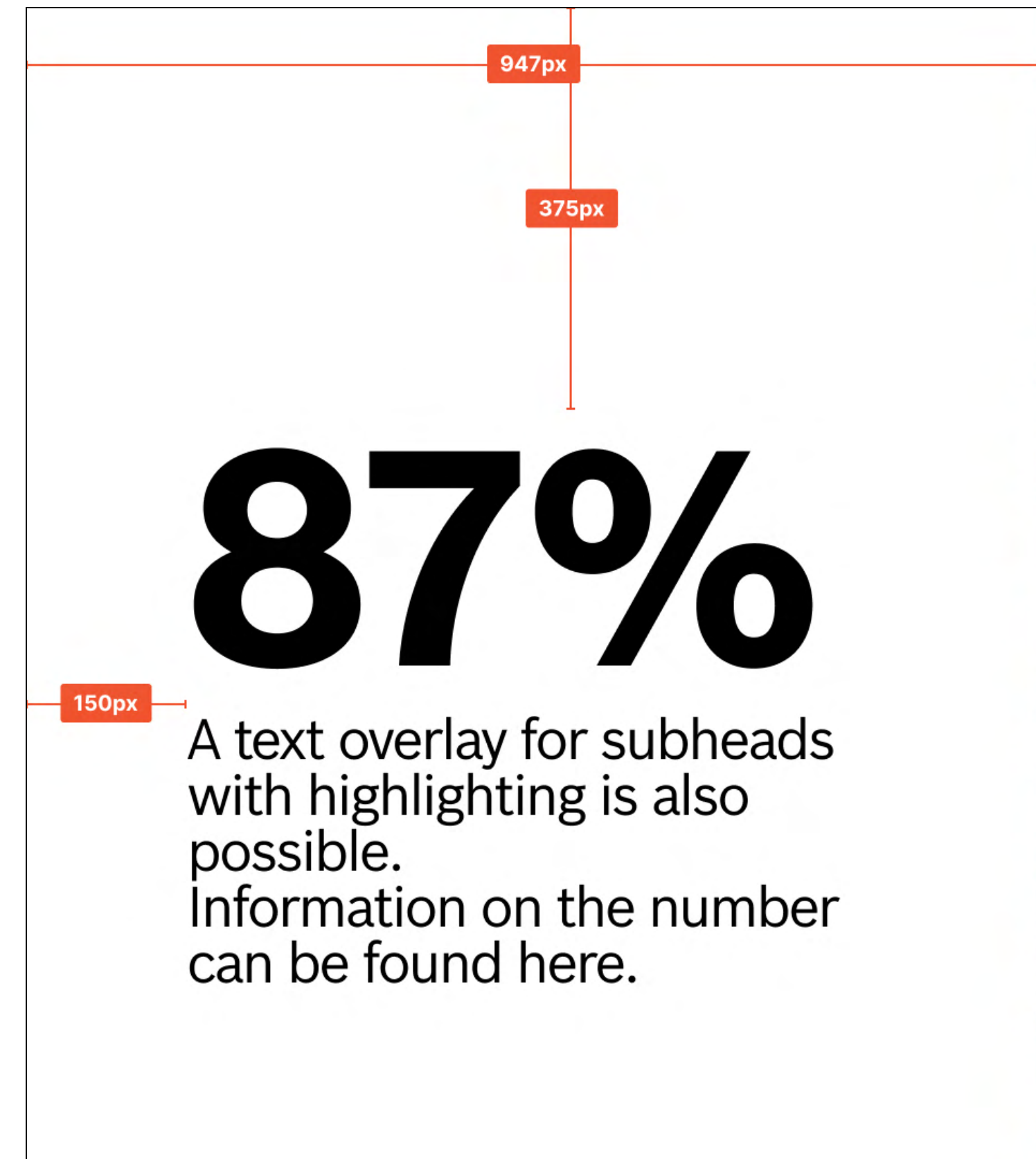
Colour selection depending on the desired area of support affiliation of the video.

## COLOUR GRADATIONS



# TEXT OVERLAYS

Text overlays







# SUBHEAD: FALLBACK

**Lorem ipsum dolor sit  
Amet, consectetur  
adipiscing elit. Aenean  
commodo ligula eget  
dolor**



The fallback variant is used, if the video material is not suitable.

Opacity: 100%.

# SUBHEAD: AREAS OF SUPPORT



If a video is to be assigned to an area of support, the subhead can be displayed with the area of support colour.

The opacity can be increased variably up to 100%, if the video material is not suitable.

Default opacity: 60%

## COLOUR GRADATIONS



## Text overlays

# HIGHLIGHTING: DEFAULT



The first line is always displayed in large. The number does not change automatically, but can be displayed smaller manually. For example, you can work with %, but also with million.

# HIGHLIGHTING: FALLBACK

**89%**

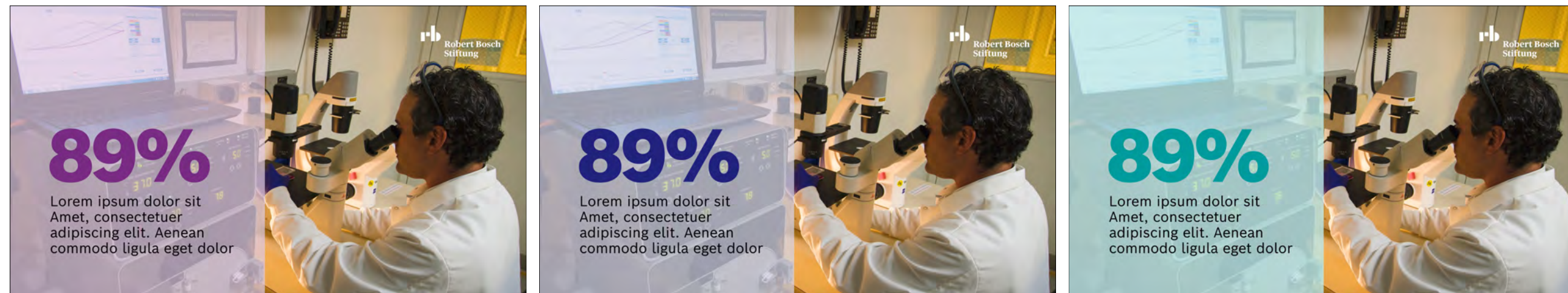
Lorem ipsum dolor sit  
Amet, consectetur  
adipiscing elit. Aenean  
commodo ligula eget dolor



The fallback variant is used, if the video material is not suitable.

Opacity: 100%.

# HIGHLIGHTING: AREAS OF SUPPORT



If a video is to be assigned to an area of support, the subhead can be displayed with the area of support colour.

The opacity can be increased variably up to 100%, if the video material is not suitable.

Default opacity: 60%

## COLOUR GRADATIONS



## Text overlays

# LOWER THIRD



---

The lower third is always at the bottom left by default. The lower third is always shown in corporate style, therefore white background with black lettering.

---

The lower third no. 2 is placed on the right side, if two people are presented. The lower thirds appear one after the other and not simultaneously.

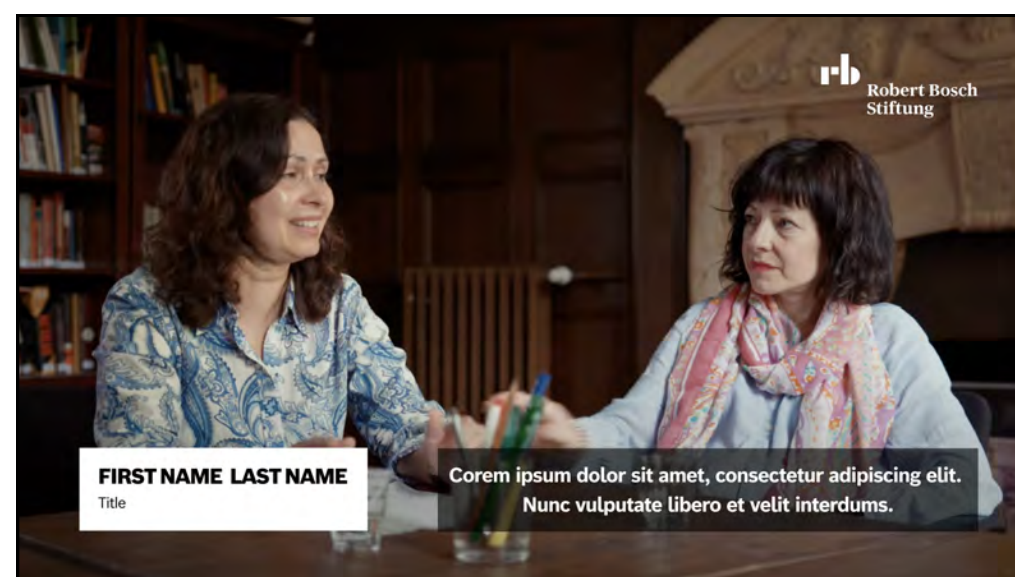
**Text overlays**

---

# SUBTITLES



Corem ipsum dolor sit amet, consectetur adipiscing elit.  
Nunc vulputate libero et velit interdums.



FIRST NAME LAST NAME  
Title

Corem ipsum dolor sit amet, consectetur adipiscing elit.  
Nunc vulputate libero et velit interdums.

Subtitles are centred and can have one or two lines. The text is always white and the black bar is always black with an opacity of 60%.

If subtitles and the lower third are displayed at the same time, the subtitles move either to the right or left of the lower third with a margin of 100 (safe space).

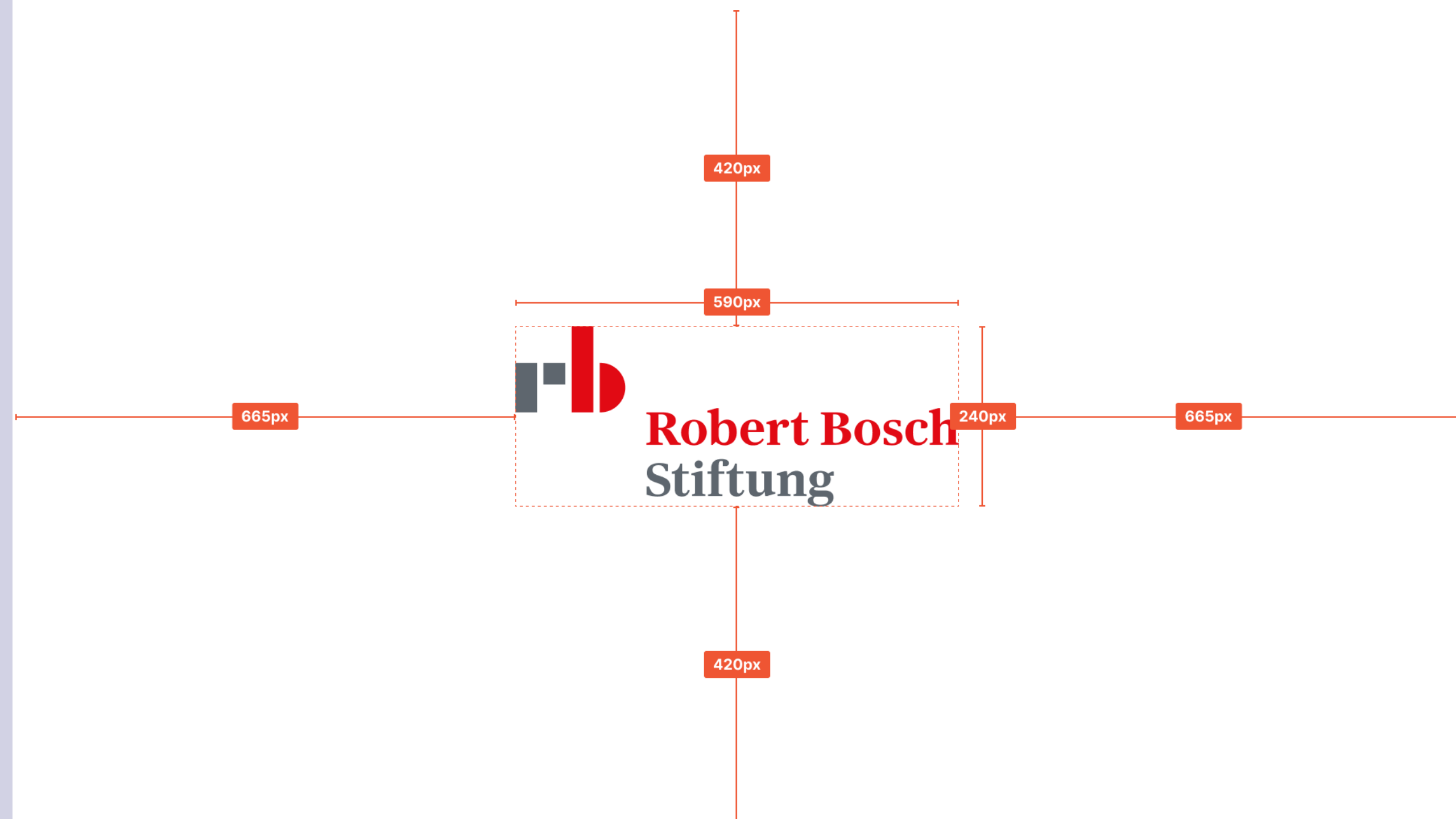
## Text overlays



# OUTRO

Outro

---



# CREDITS: DEFAULT

## **IN COOPERATION WITH**

Vorem ipsum dolor sit amet, consectetur adipiscing elit. Nunc vulputate libero et velit interdum, ac aliquet odio mattis. Class aptent taciti sociosqu ad litora torquent per conubia nostra, per inceptos himenaeos. Curabitur tempus urna at turpis condimentum lobortis. Ut commodo efficitur neque.

The credits appear after the background colour fades in.  
Opacity: 100%

# CREDITS: AREAS OF SUPPORT

## IN COOPERATION WITH

Vorem ipsum dolor sit amet, consectetur adipiscing elit. Nunc vulputate libero et velit interdum, ac aliquet odio mattis. Class aptent taciti sociosqu ad litora torquent per conubia nostra, per inceptos himenaeos. Curabitur tempus urna at turpis condimentum lobortis. Ut commodo efficitur neque.

## COLOUR GRADATIONS



Background

Headline

Text

If a video is to be assigned to an area of support, the outro can be played in the colours of the respective area of support. Opacity: 100%

Outro

# LOGO: OUTRO



As with the title, the logo animates in with a line animation and closes the video.

Opacity: 100%

The logo in the outro can either be played in corporate style (white & coloured logo) or in the area of support colours (coloured background with black logo) - depending on whether a video is to be assigned to an area of support.

## COLOUR GRADATIONS



Background

Logo colour

## Outro

# SOCIAL MEDIA

Social Media



# INTRO

## WITHOUT SUBLINE



## WITH SUBLINE

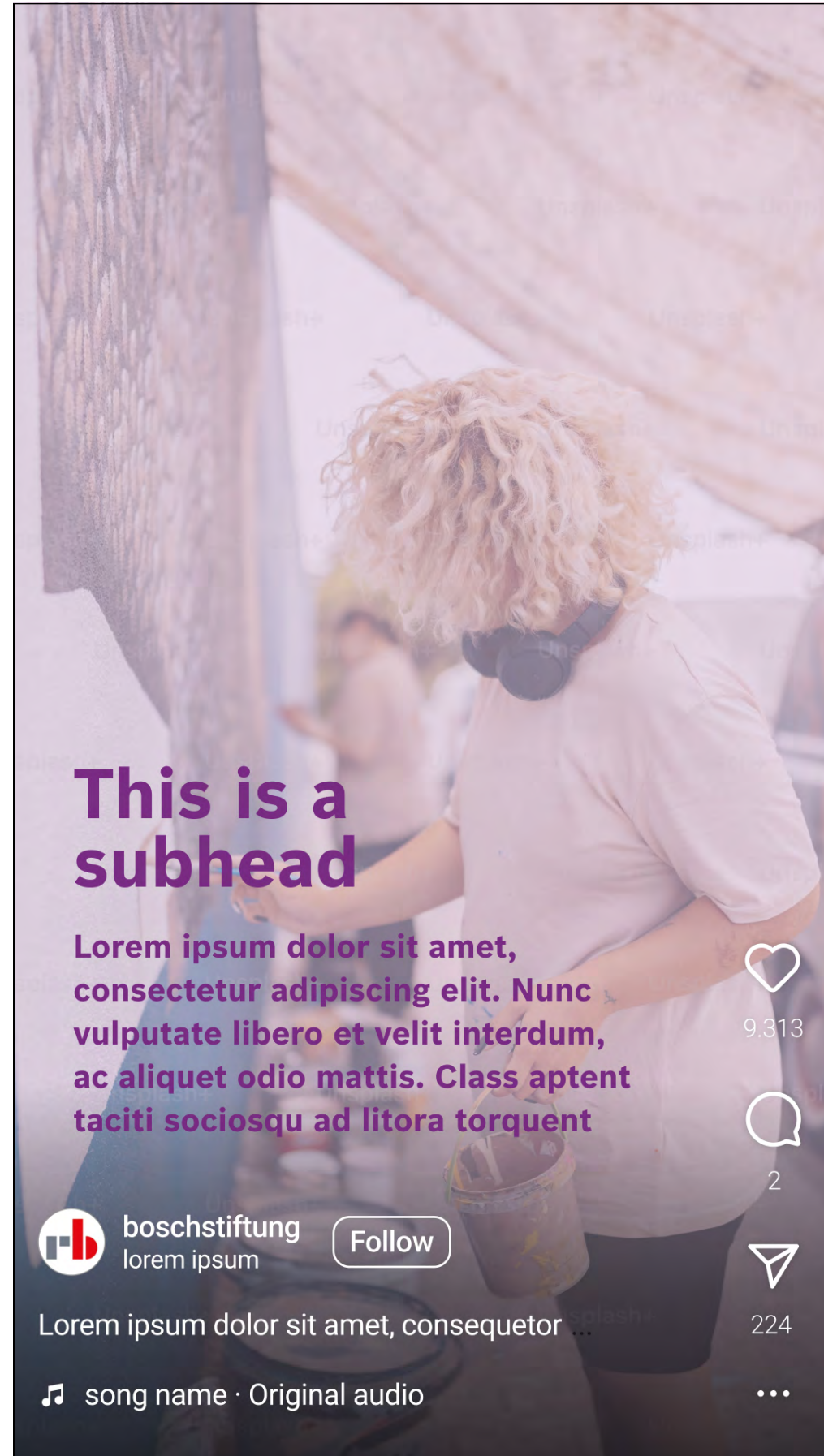


---

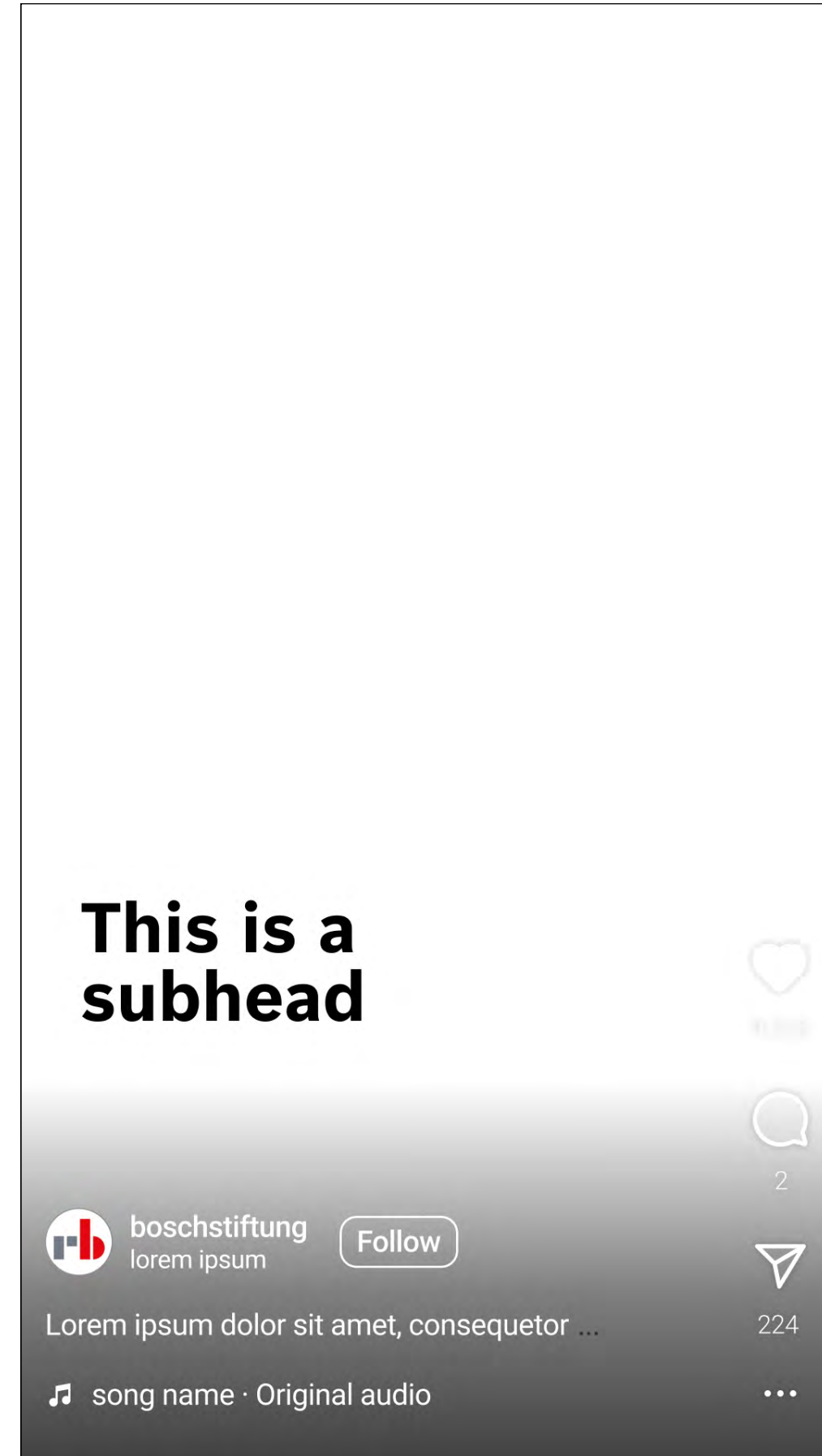
If an intro is required, it's located in the top left-hand section and is darkened for better legibility. A subline can also be added as an option.

# SUBHEAD

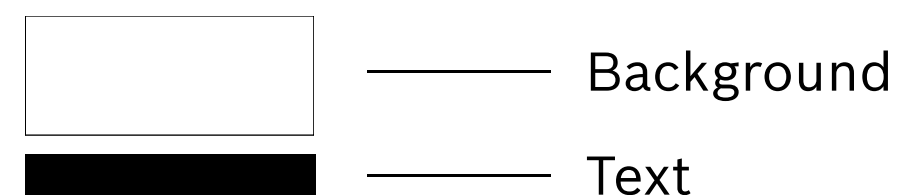
## CORPORATE & AREAS OF SUPPORT



## FALLBACK



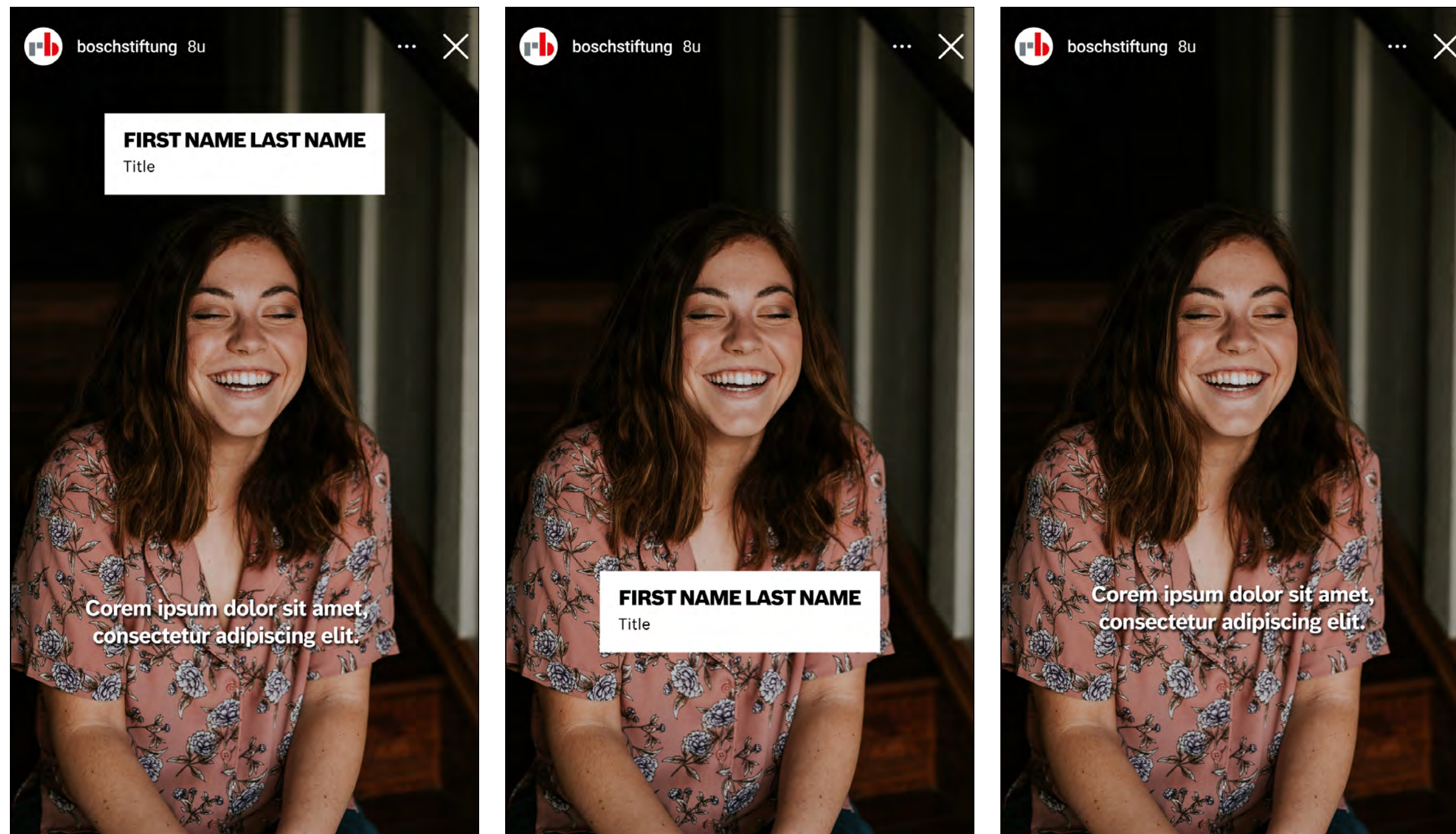
The subhead appears in the area of support colours or the corporate grey - depending on whether a video is to be assigned to an area of support. The fallback variant has a white background without transparency. A subline can also be displayed.



## Social Media

# LOWER THIRD & SUBTITLES

## Default



---

The lower third appears centred at the top of the video by default so that the subtitles can be placed at the bottom at the same time. If no subtitles are required, the lower third can also be at the bottom.

---

The subtitles are displayed centred at the bottom by default.

## Social Media

---

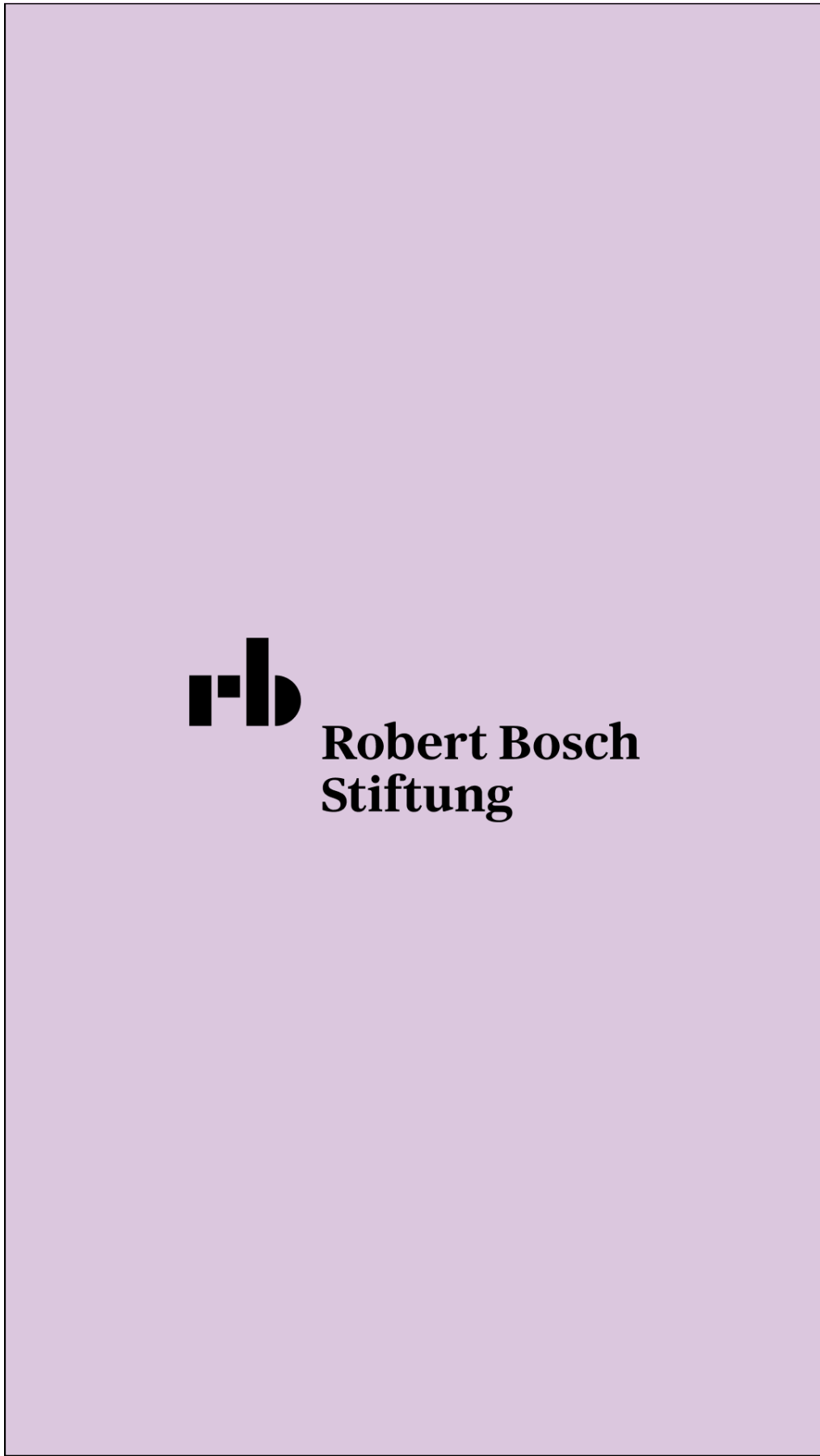


# LOGO: OUTRO

## CORPORATE



## AREAS OF SUPPORT



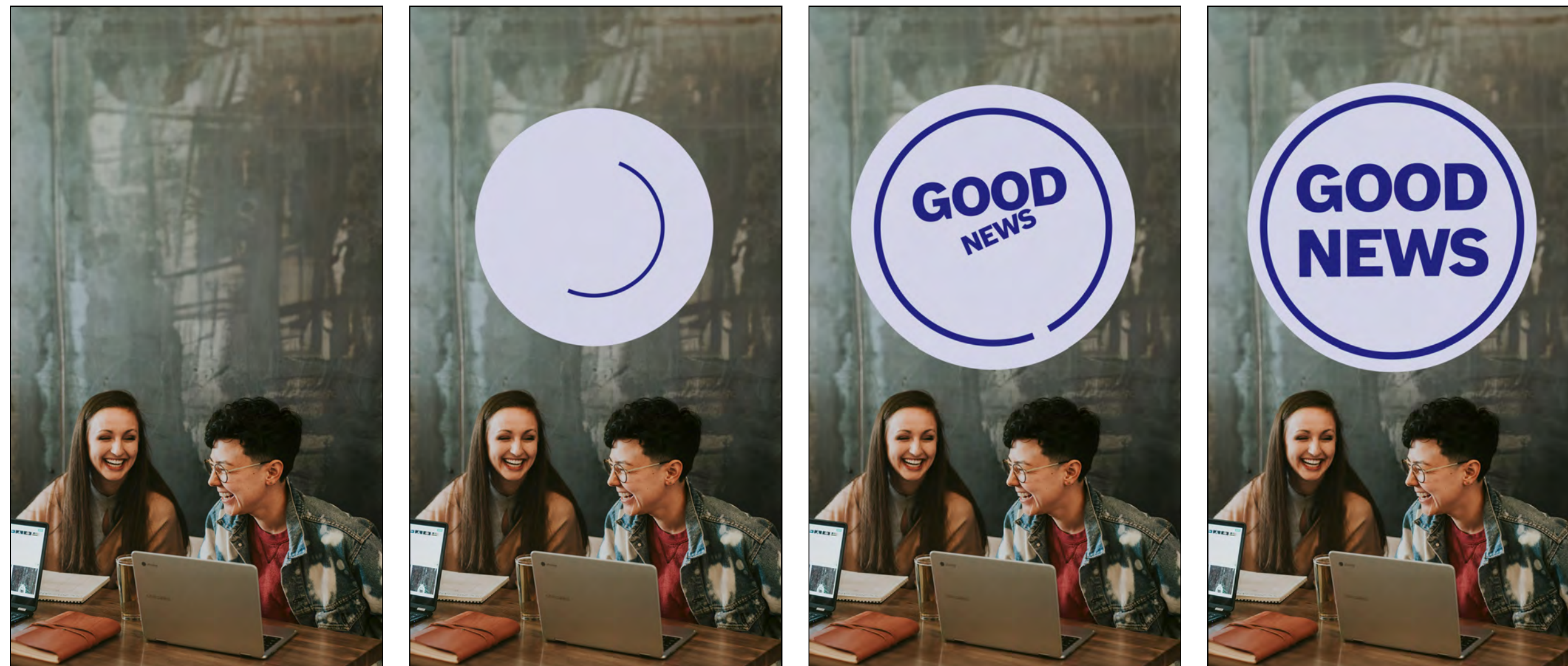
If a video is to be assigned to an area of support, the outro can be displayed in the respective area of support colour. In this case, the logo is coloured black.

## Social Media



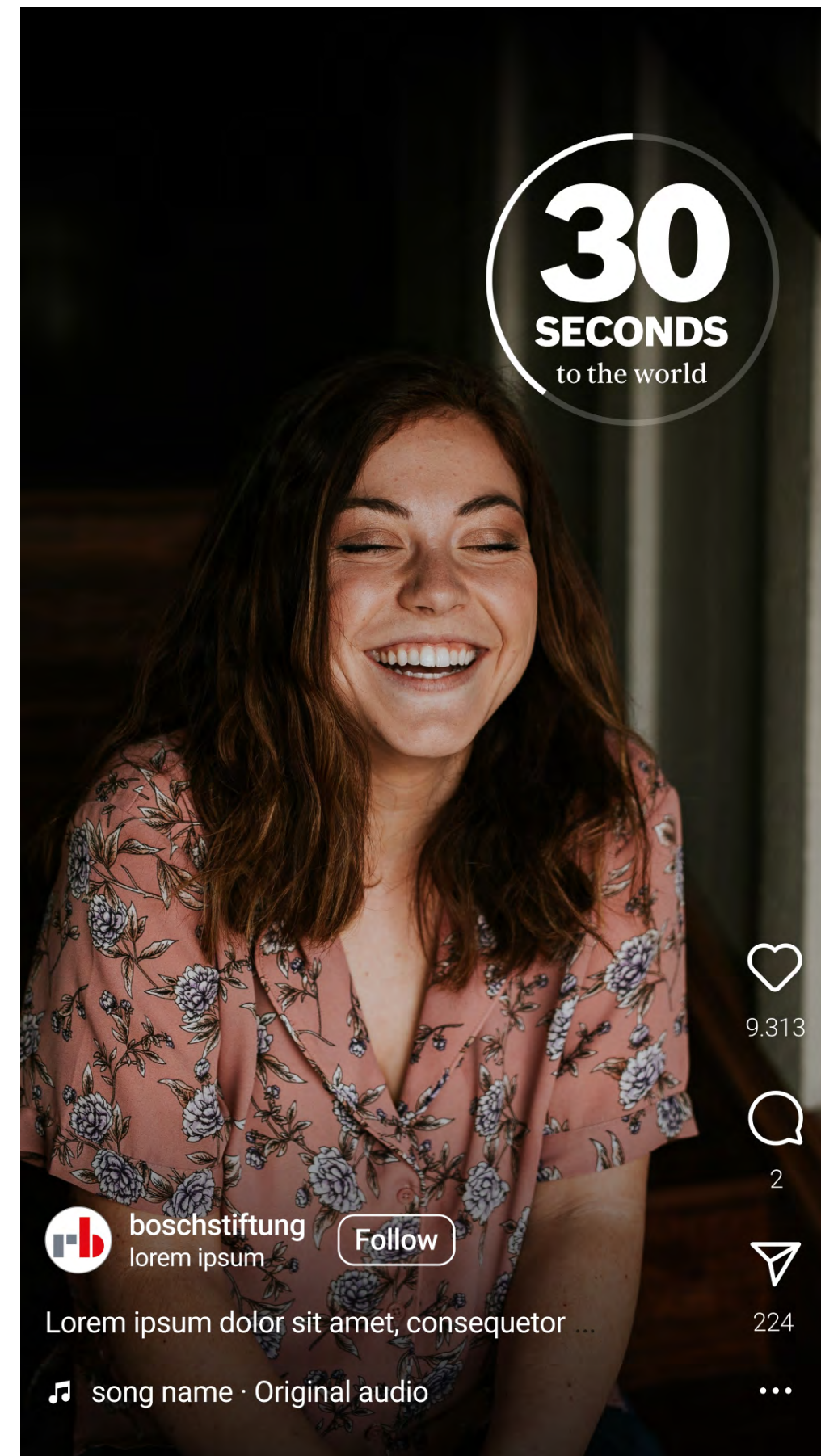
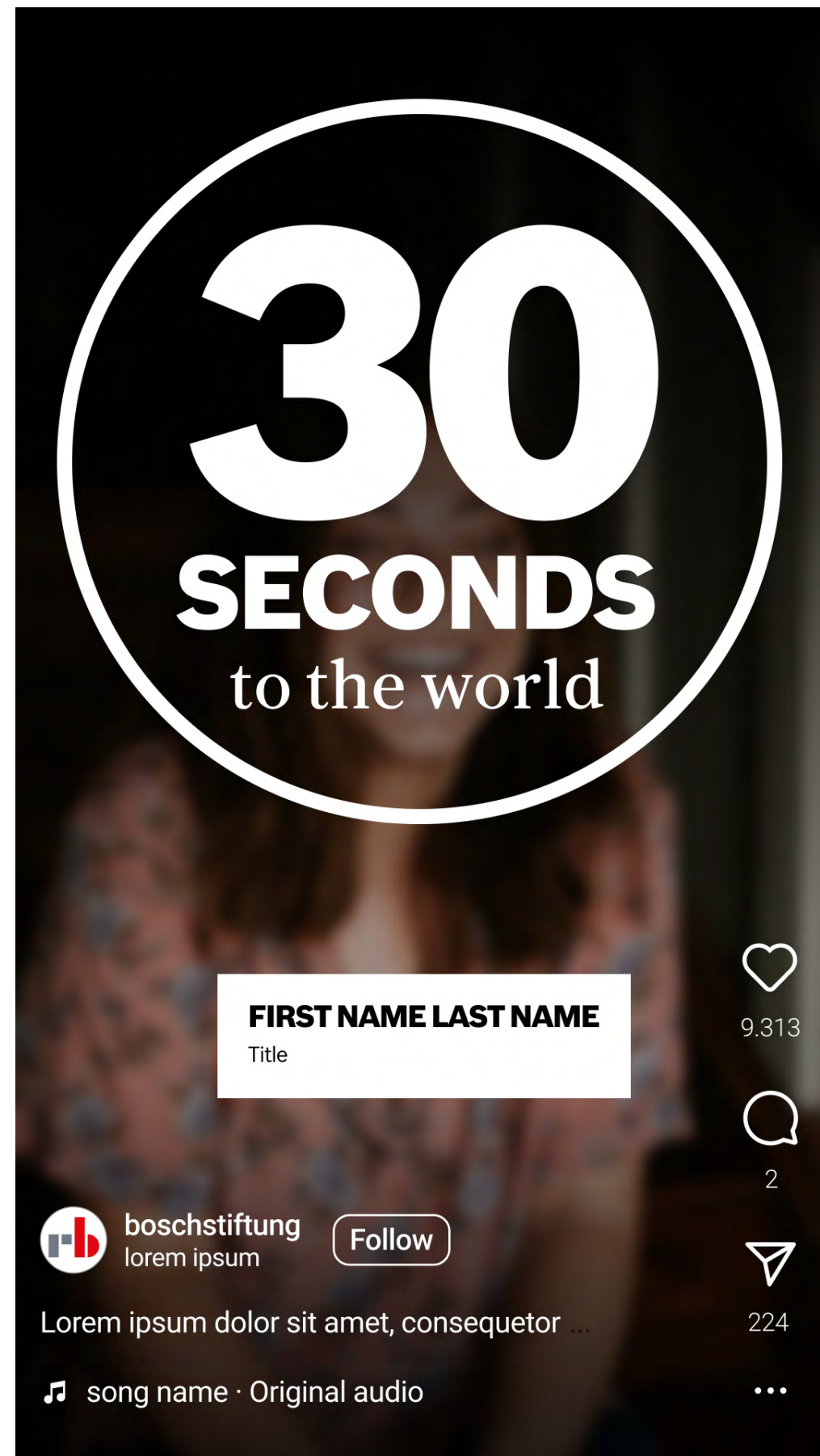
— Background  
— Logo colour

# GOOD NEWS



The key visual described on the left can be used for news items that require special emphasis ("Good News"). Depending on the affiliation of the video (area of support or corporate), the respective colour can be used.

# 30 SECONDS TO THE WORLD



The animation described on the left can be used for the social media format "30 Seconds to the World".

In the first animation, the video itself is blurred and the quote provider is introduced in a lower third.

The animation shrinks and moves to the top right, where the circle runs clockwise depending on the animation length.

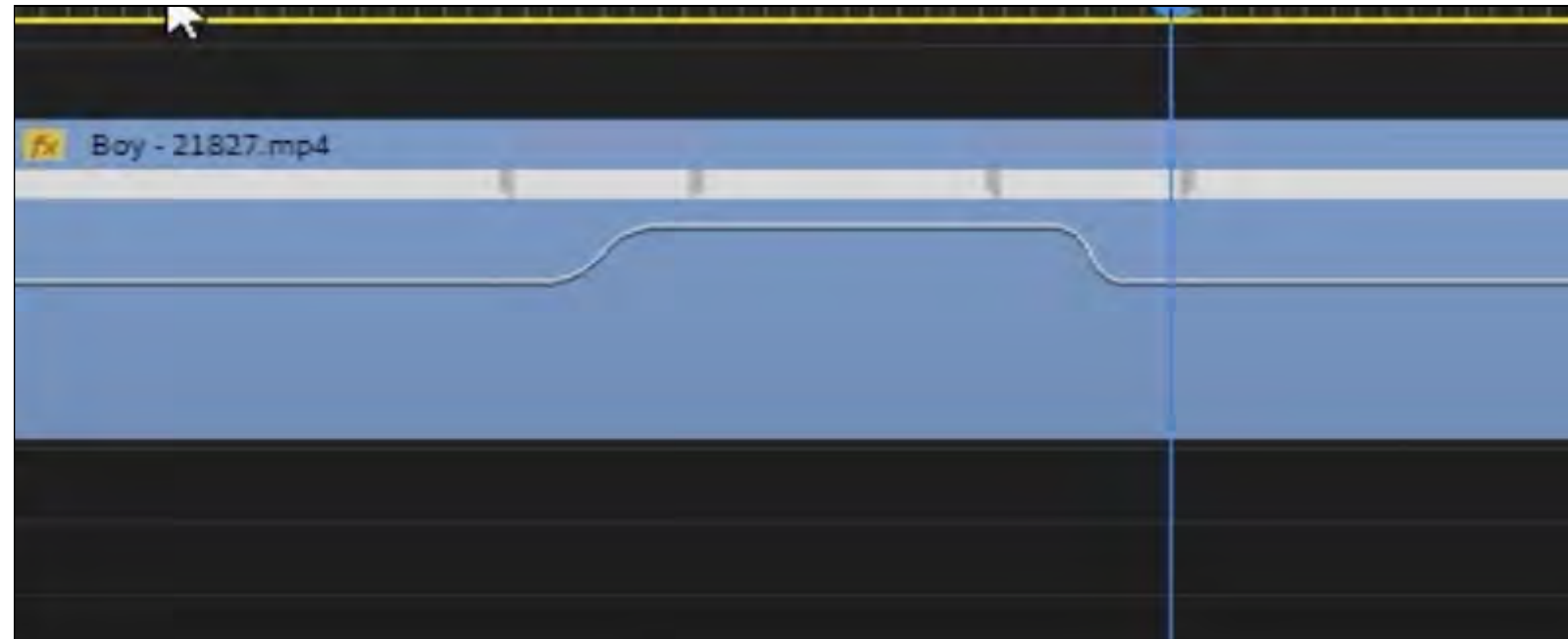
The animation length can be shorter than 30 seconds, depending on requirements.

# TRANSITIONS & EFFECTS



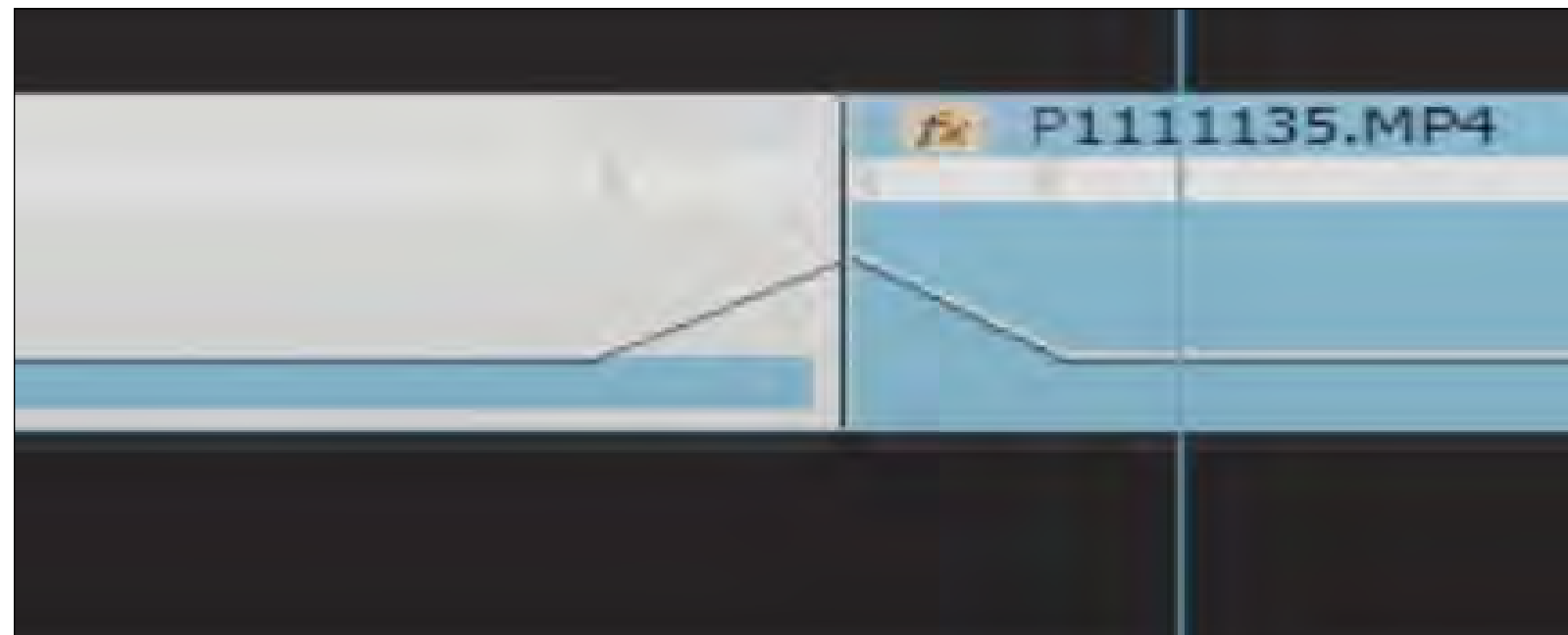
# SPEED RAMP

## OPTION 01



Speed ramp within a clip

## OPTION 02



Speed ramp between two clips

## Transitions & Effects

To add more dynamics to transitions and individual sequences, you have the option of using so-called “speed ramps”.

By dynamically changing the video speed, long sequences can be shortened and transitions adjusted organically.

These speed ramp effects must be created manually in Premiere Pro.

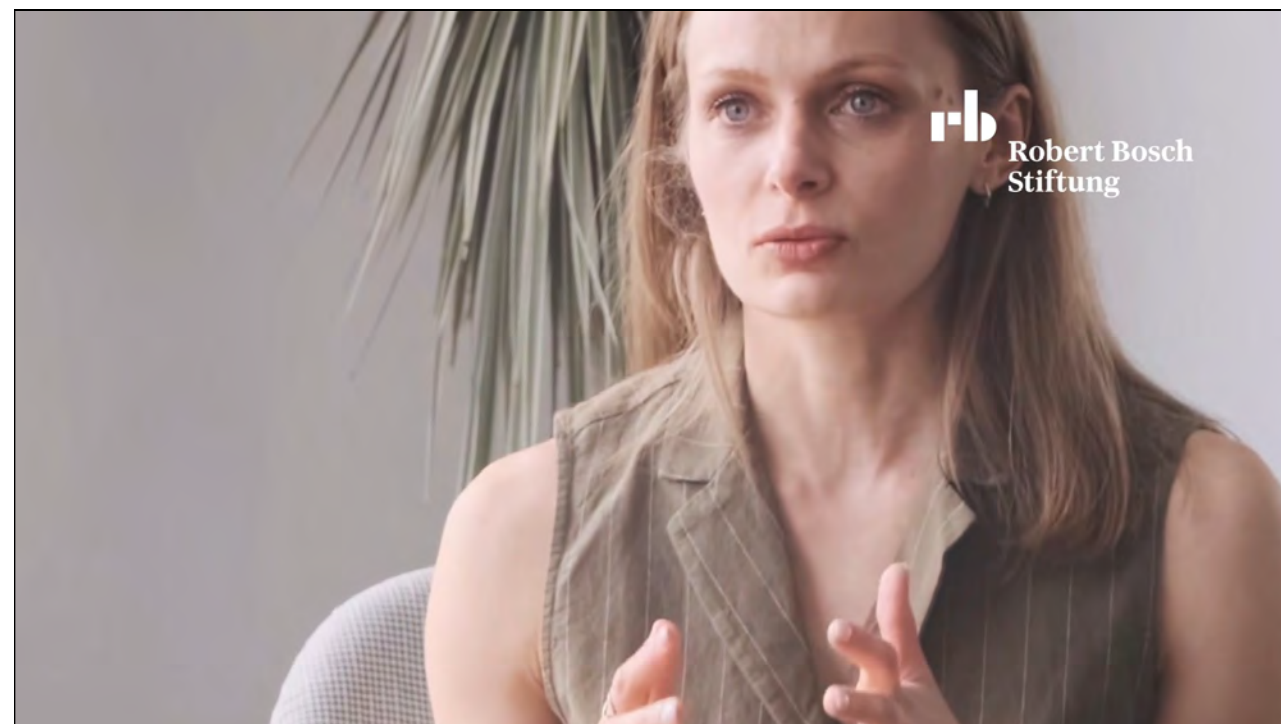
Important: the video material should not be slower than at least 25 fps to ensure smooth playback.

[Video tutorial](#)

# JUMP CUT



100%



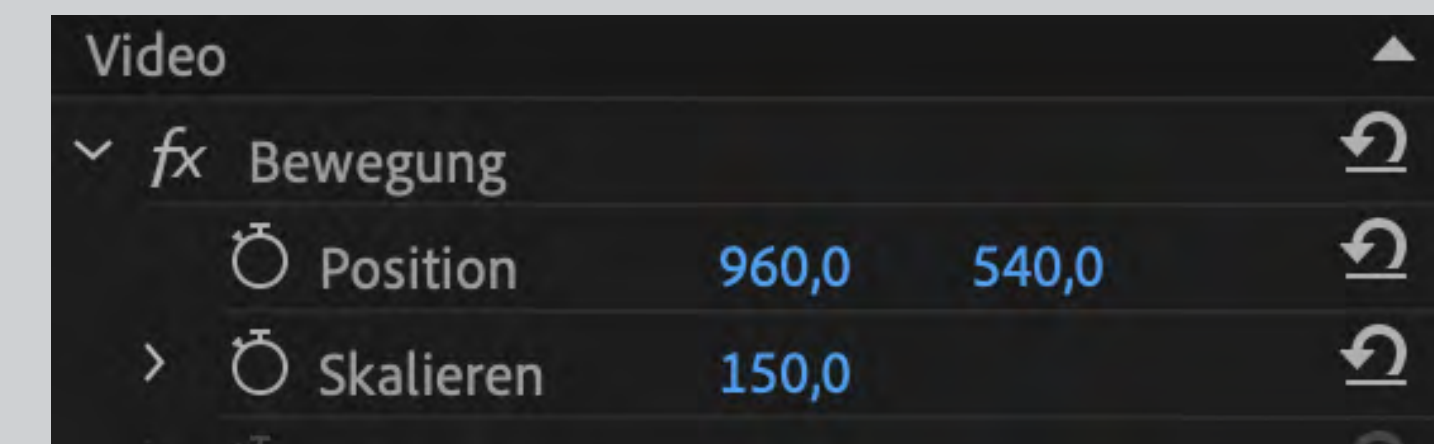
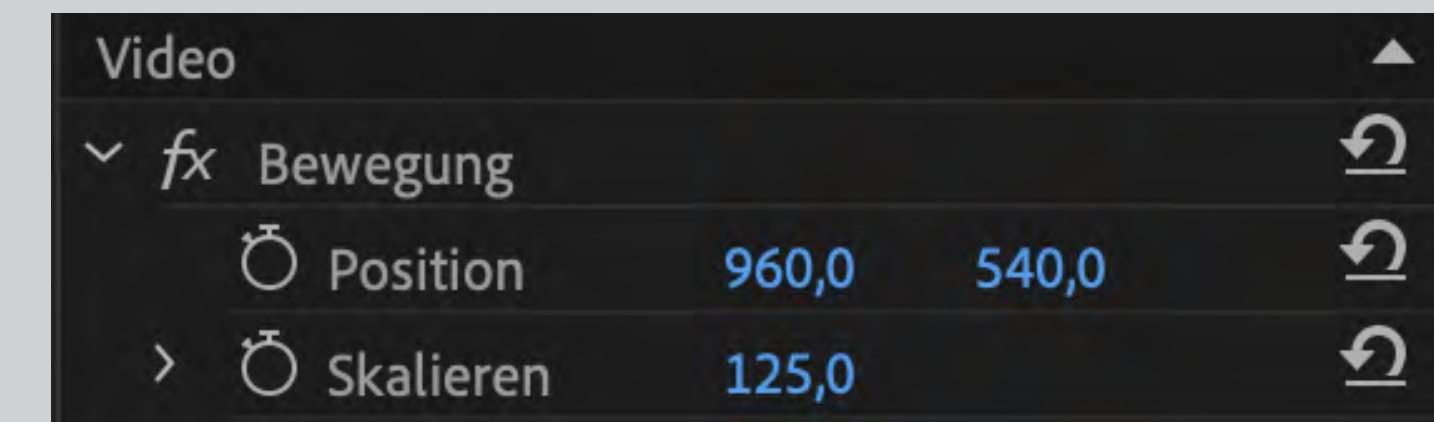
150%

## Transitions & Effects

To create the impression of a wider camera perspective, a +25% (for Full HD) and/or a +50% (for > UHD) zoom can be used.

The effect must be created manually in Premiere Pro.

The desired scaling can be adjusted via the effect settings.



# SPLIT SCREEN

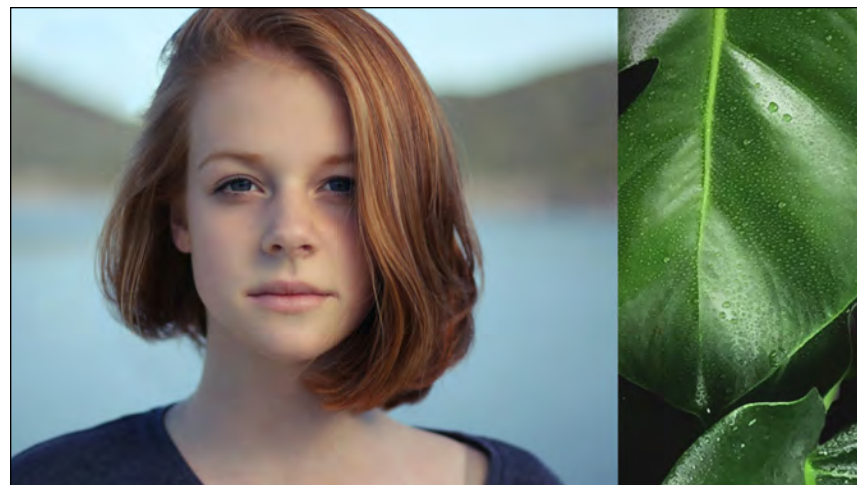
30/70%



50/50%



70/30%



30/70%

50/50%

70/30%

To create even more depth of information in interviews, for example, it is possible to use split screens.

They make it possible to show the A-camera and B-roll at the same time and make the picture more interesting.

The following variants may be used:

50/50%

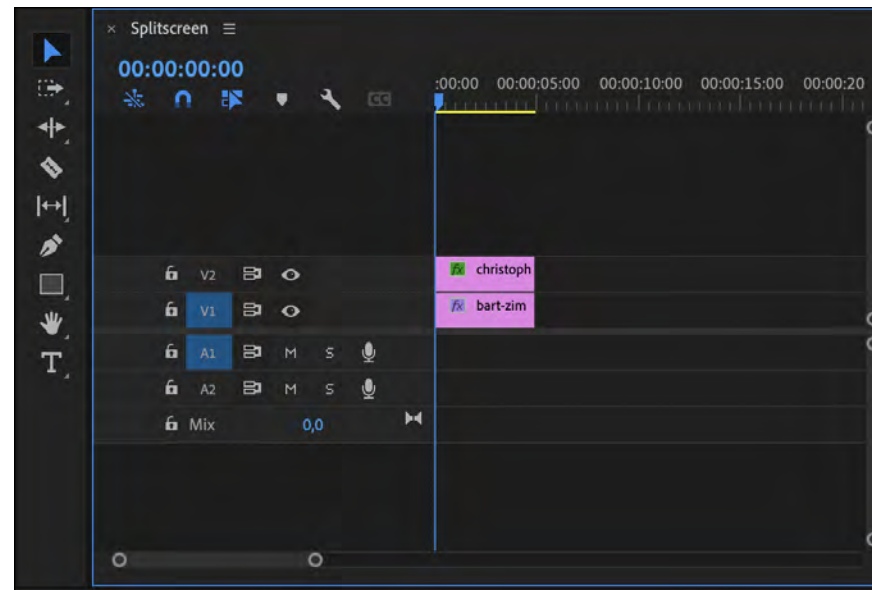
30/70%

70/30%

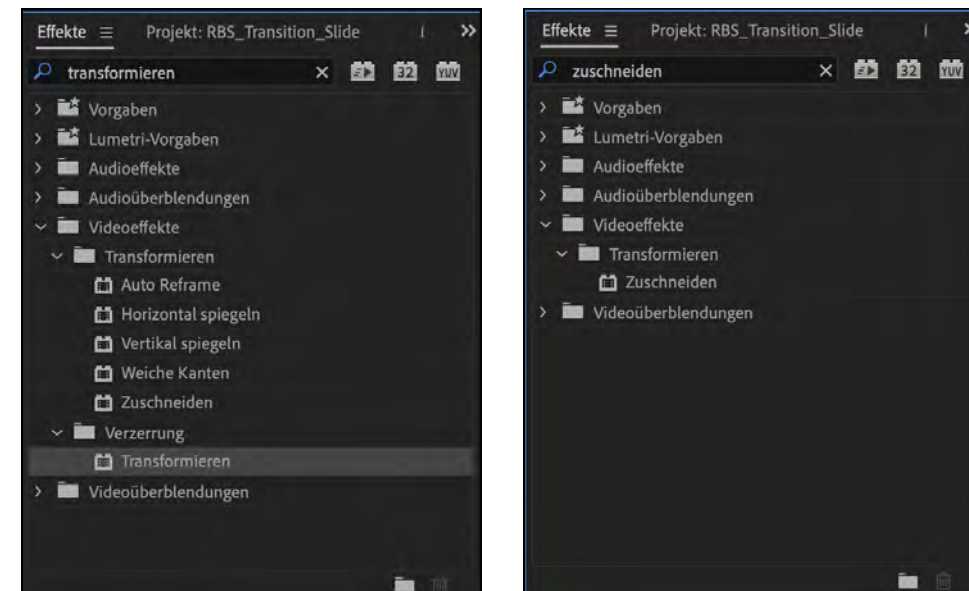
The effect must be created manually in Premiere Pro.

# SPLIT SCREEN: HOW TO

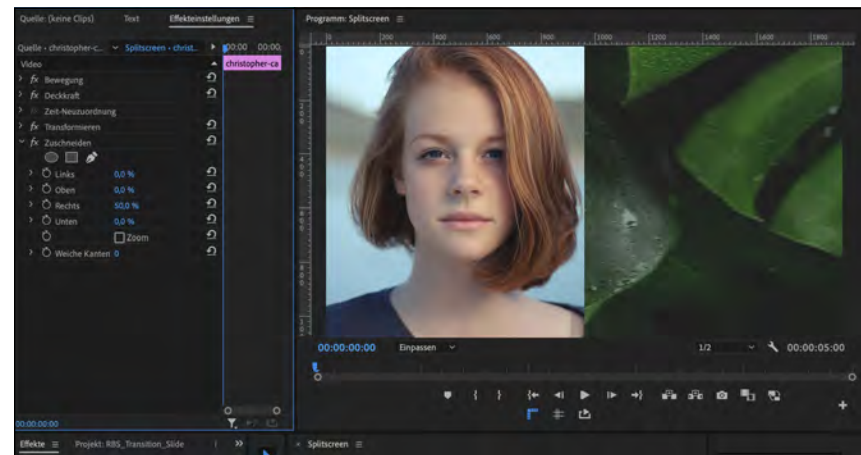
1. Overlay material



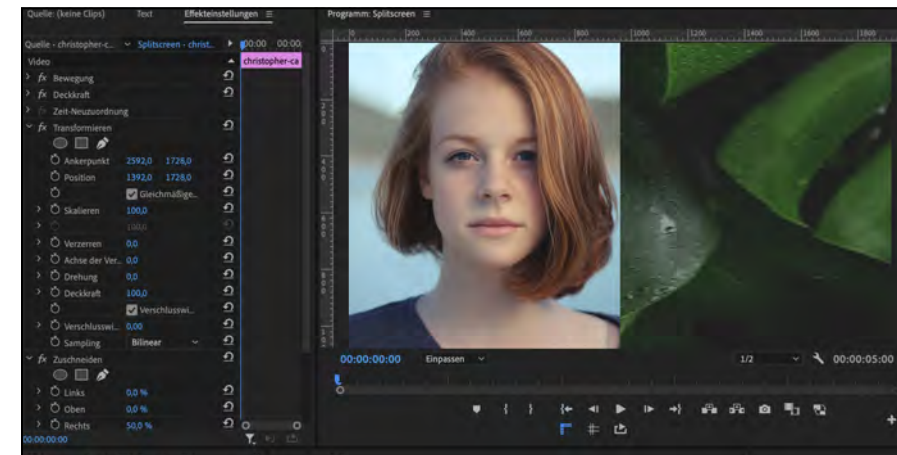
2. Transform + apply cropping effect to material (drag & drop)



3. Determine the percentage with the cropping effect



4. Align the material using the transform effect (position + scaling)



The following variants may be used:

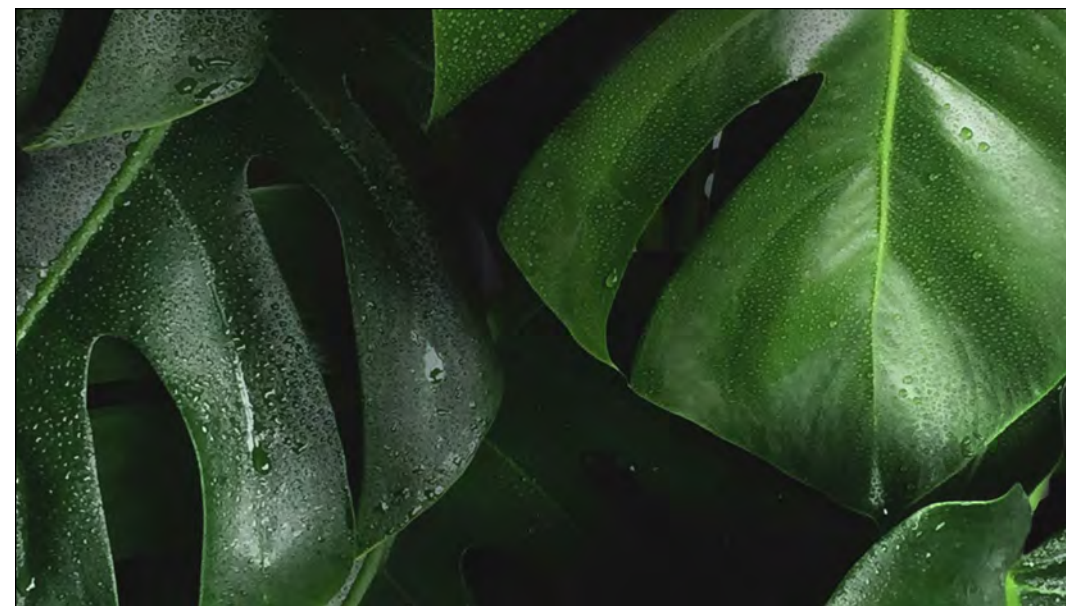
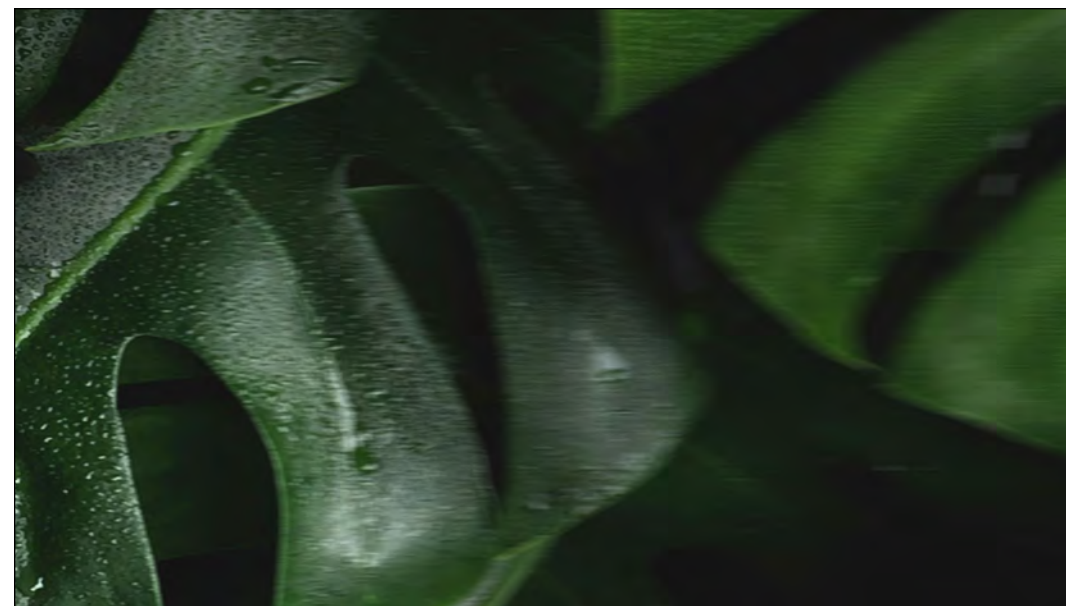
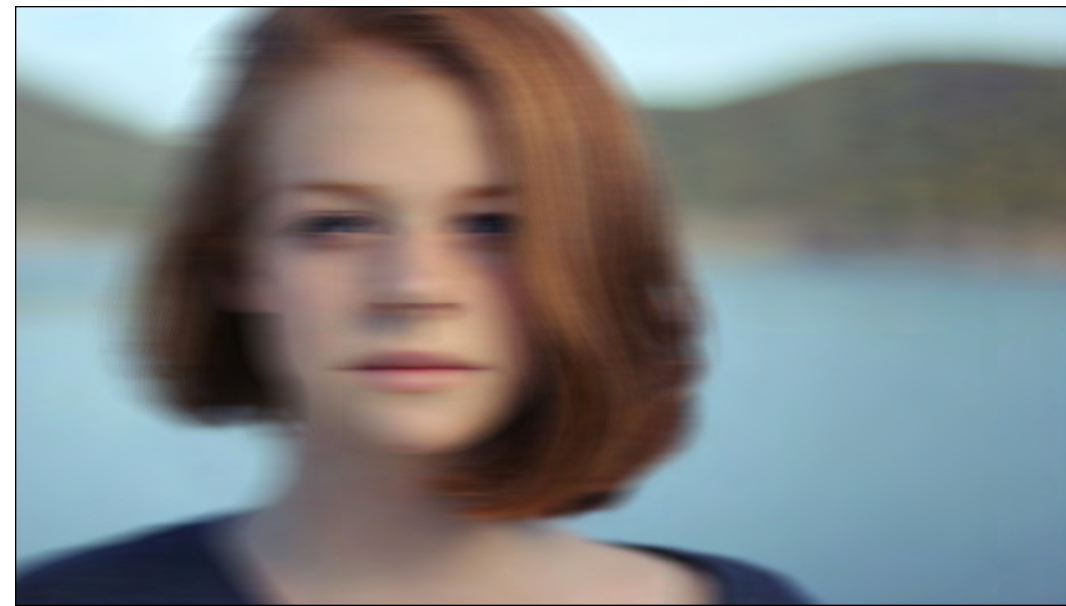
50/50%

30/70%

70/30%



# STRETCH EFFECT

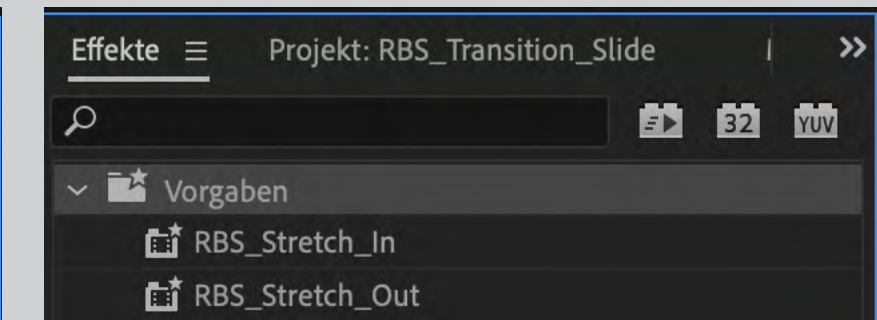
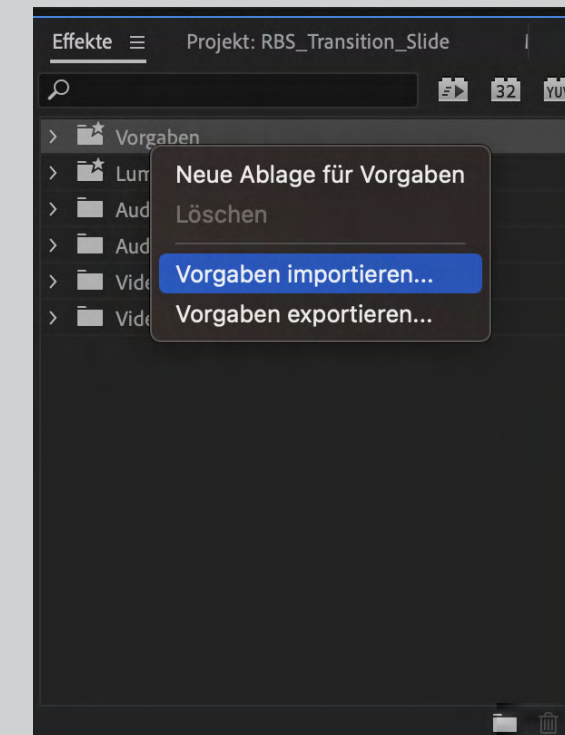


To avoid hard cuts, it is advisable to use the "stretch effect".

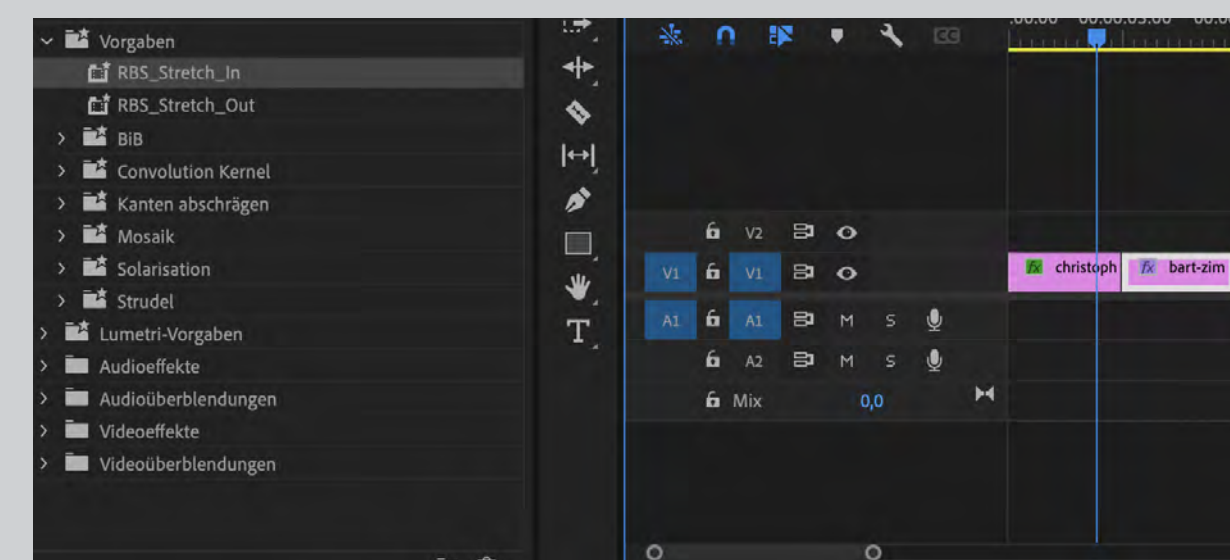
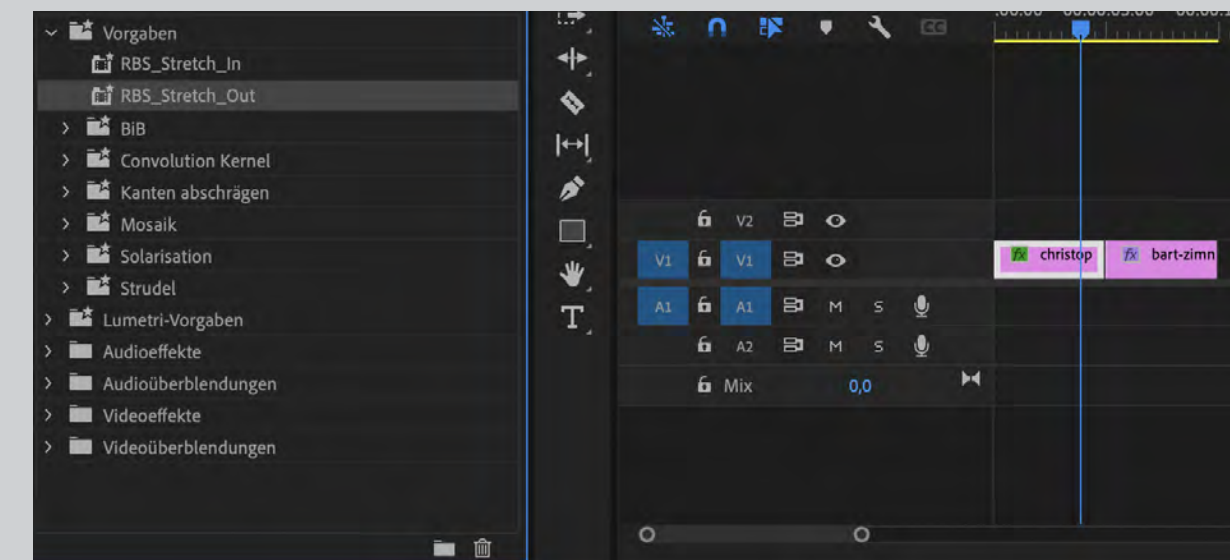
The effect must be created manually in Premiere Pro.

## Transitions & Effects

### 1. Import defaults



### 2. Drag & drop specification onto material



# SPLIT LINE TRANSITION



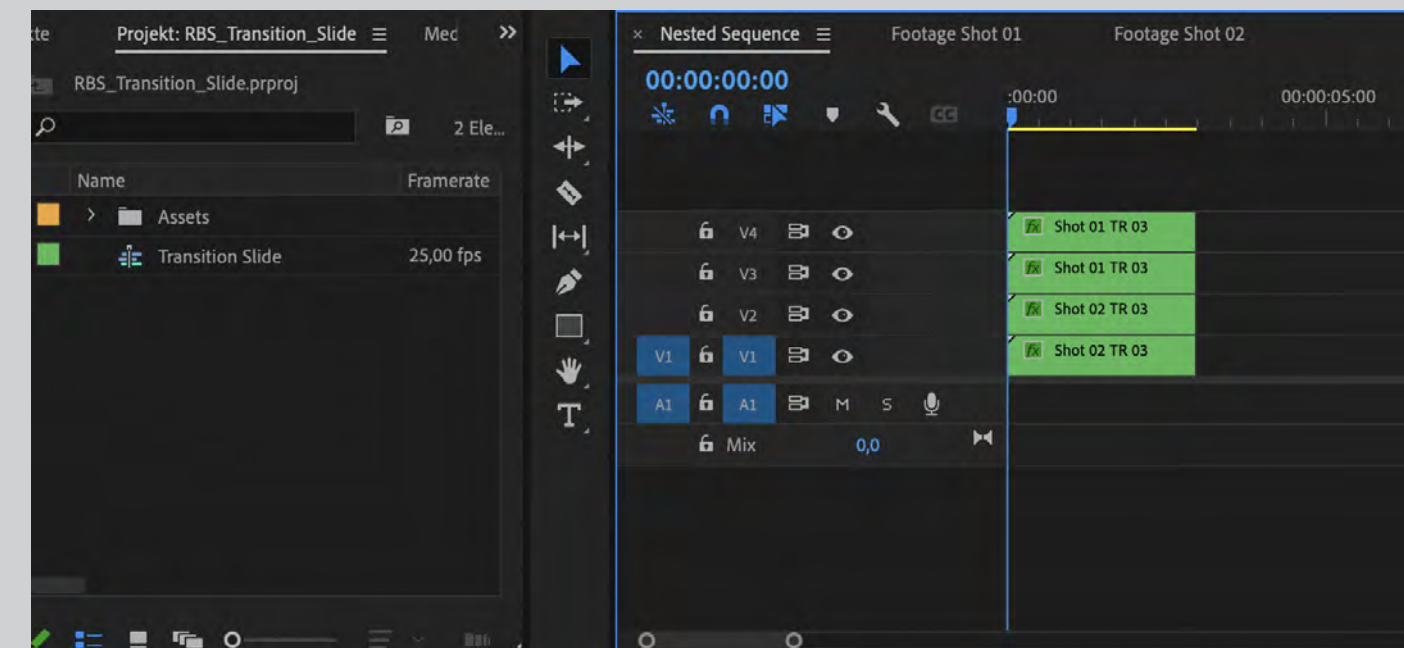
To connect two scenes dynamically, it is a good idea to use the "Split Line Transition".

**Please only use this effect sparingly, sensibly and in a content-related manner.**

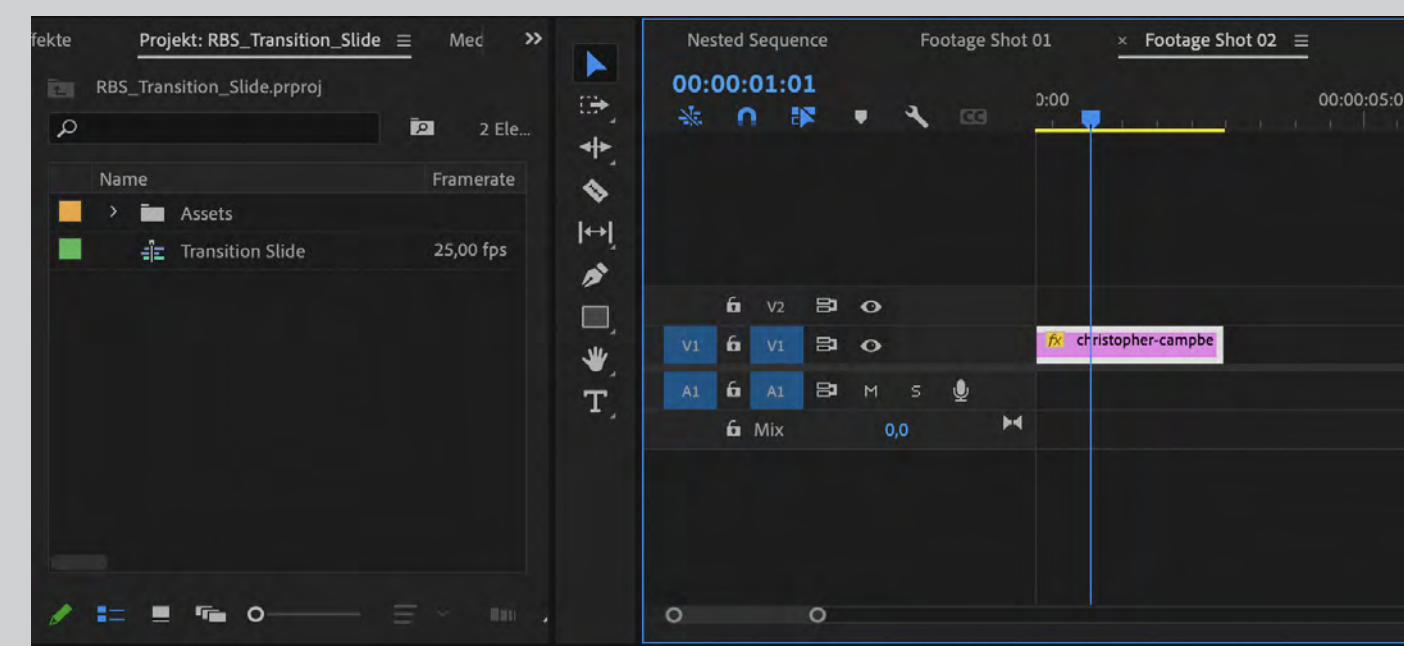
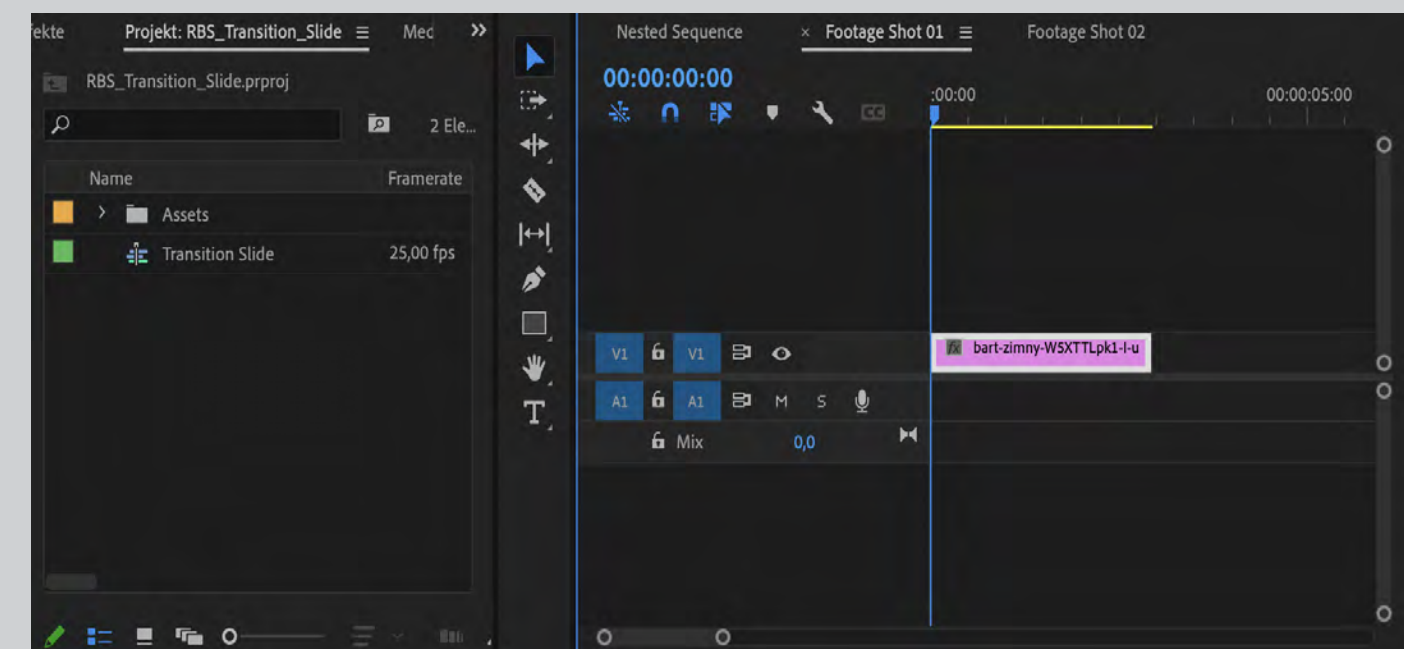
The effect must be created manually in Premiere Pro and can also be used vertically.

## Transitions & Effects

### 1. Import defaults



### 2. Replace material in "Shot 1" and "Shot 2" (drag & drop)



# DOWNLOAD & PRESETS

Download & Presets

---



The animations described are available for download from the Robert Bosch Stiftung. Please get in touch with your contact person if required.